



TOURIST ACCOMMODATION AUSTRALIA

EMBARGO: 11.30AM (CANBERRA TIME) THURS 30 SEP 2004

C O N T E N T S

	<i>page</i>
Notes	2
Summary of findings	3
List of tables	7

ADDITIONAL INFORMATION

Explanatory Notes	41
Glossary	44

- For further information about these and related statistics, contact the National Information and Referral Service on 1300 135 070.

NOTES

FORTHCOMING ISSUES

<i>ISSUE (Quarter)</i>	<i>RELEASE DATE</i>
September 2004	10 January 2005
December 2004	30 March 2005



ABOUT THIS PUBLICATION

This publication presents results from the quarterly Survey of Tourist Accommodation (STA). The scope of the STA includes hotels, motels and guest houses and serviced apartments with 15 or more rooms.

For 2004 the STA includes the following categories of establishments which provide predominantly short-term non-residential accommodation to the general public:

- hotels and resorts with facilities and 15 or more rooms
- motels, private hotels and guest houses with facilities and 15 or more rooms
- serviced apartments with 15 or more units.

Dennis Trewin
Australian Statistician

SUMMARY OF FINDINGS

SEASONALLY ADJUSTED AND TREND

SEASONALLY ADJUSTED AND TREND KEY FIGURES, Hotels, motels and guest houses and serviced apartments—Australia

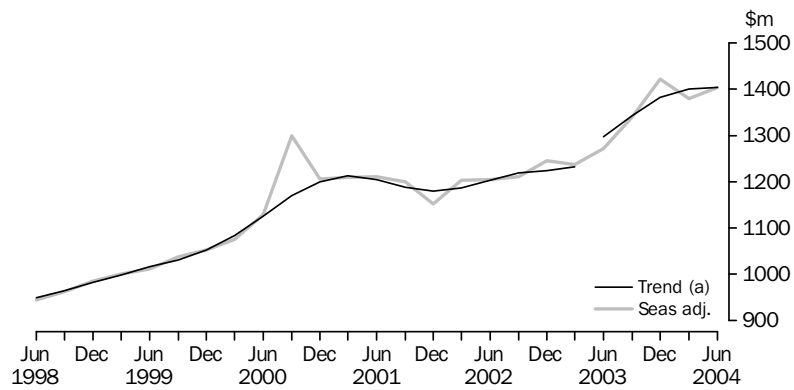
	Jun Qtr 2003	Mar Qtr 2004	Jun Qtr 2004
Seasonally Adjusted			
Room occupancy rate (%)	58.3	61.1	61.6
Takings from accommodation ('000)	1 272 117	1 378 662	1 403 593
Trend			
Room occupancy rate (%)	59.4	61.7	61.5
Takings from accommodation ('000)	1 297 080	1 401 074	1 404 420

Accommodation takings

The trend estimate of the total accommodation takings for hotels, motels and guest houses and serviced apartments combined increased by 8.3% to \$1,404.4 million in June quarter 2004 compared with June quarter 2003.

The seasonally adjusted estimate of the total accommodation takings rose by 10.3% to \$1,403.6 million from June quarter 2003 to June quarter 2004.

ACCOMMODATION TAKINGS (a), Seasonally adjusted and Trend—Australia



(a) Break in time series between the March and June quarters 2003. See Explanatory Notes.

Room occupancy rate

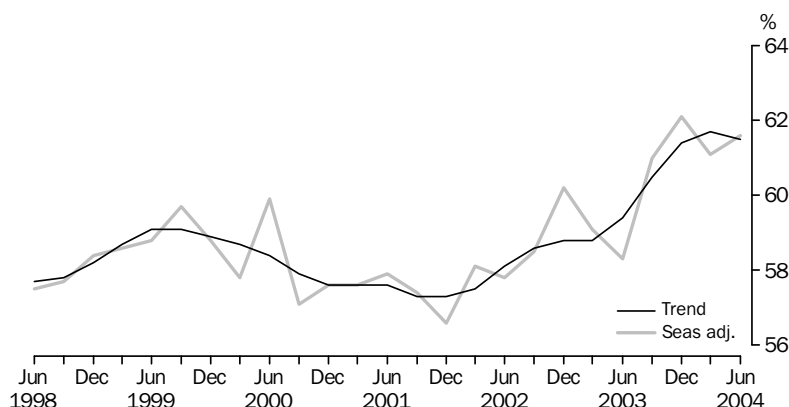
The trend estimate of the room occupancy rate for hotels, motels and guest houses and serviced apartments combined rose by 2.1 percentage points from 59.4% in June quarter 2003 to 61.5% in June quarter 2004.

The seasonally adjusted estimate of the room occupancy rate increased by 3.3 percentage points to 61.6% from June quarter 2003 to June quarter 2004.

SUMMARY OF FINDINGS *continued*

Room occupancy rate
continued

ROOM OCCUPANCY RATE(a), Seasonally adjusted and
Trend—Australia



(a) Room occupancy rates are not subject to a break in series.

ORIGINAL

ORIGINAL KEY FIGURES, Australia

	Jun Qtr 2003	Mar Qtr 2004	Jun Qtr 2004
Hotels			
Guest rooms (no.)	78 089	78 474	78 796
Room nights occupied ('000)	4 109.4	4 798.4	4 506.3
Room occupancy rate (%)	57.8	67.3	63.2
Takings from accommodation (\$'000)	553 849	691 864	627 765
Takings per room night occupied (\$)	134.8	144.2	139.3
Motels and guest houses			
Guest rooms (no.)	85 148	84 903	84 532
Room nights occupied ('000)	3 954.8	4 137.2	4 022.9
Room occupancy rate (%)	51.1	53.7	52.6
Takings from accommodation (\$'000)	351 004	386 199	368 779
Takings per room night occupied (\$)	88.8	93.3	91.7
Serviced apartments			
Guest rooms (no.)	39 182	40 734	41 104
Room nights occupied ('000)	2 119.6	2 480.9	2 278.5
Room occupancy rate (%)	59.4	67.0	61.2
Takings from accommodation (\$'000)	254 647	320 510	280 920
Takings per room night occupied (\$)	120.1	129.2	123.3
Total			
Guest rooms (no.)	202 419	204 111	204 432
Room nights occupied ('000)	10 183.8	11 416.5	10 807.7
Room occupancy rate (%)	55.3	61.6	58.4
Takings from accommodation (\$'000)	1 159 500	1 398 573	1 277 463
Takings per room night occupied (\$)	113.9	122.5	118.2

Accommodation takings

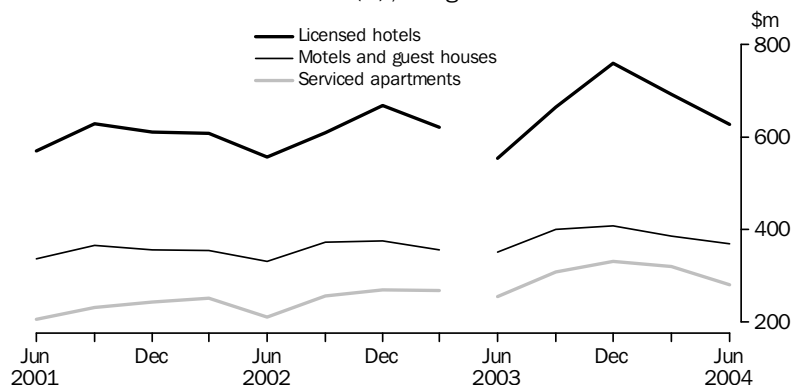
In June quarter 2004, accommodation takings for hotels, motels and guest houses and serviced apartments combined were \$1,277.5 million. This was an increase of 10.2% (\$118.0 million) from June quarter 2003. The average takings per room night occupied for hotels, motels and guest houses and serviced apartments combined was \$118.20.

Hotels were the highest contributor to accommodation takings with \$627.8 million (49.1%). Takings per room night occupied in June quarter 2004 were highest for hotels at \$139.30.

SUMMARY OF FINDINGS *continued*

Accommodation takings *continued*

ACCOMMODATION TAKINGS(a), Original—Australia



(a) Break in time series between the March and June quarters 2003. See Explanatory Notes.

The contributions of accommodation takings in June quarter 2004 for hotels, motels and guest houses and serviced apartments combined were highest in New South Wales (33.6%) and Queensland (27.2%) and lowest in Tasmania (2.5%).

Room nights occupied

Total room nights occupied were 10.8 million in June quarter 2004 for hotels, motels and guest houses and serviced apartments combined. Room nights occupied increased by 6.1% (0.6 million) from June quarter 2003 to June quarter 2004.

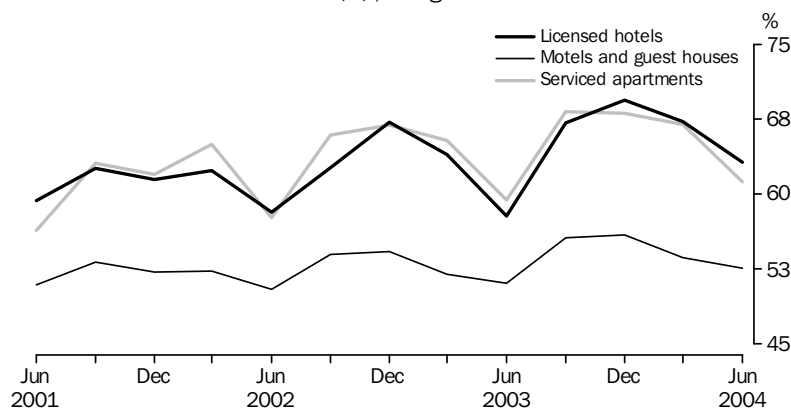
Hotels represented 4.5 million (41.7%) of the total room nights occupied, while motels and guest houses represented 4.0 million (37.2%) and serviced apartments represented 2.3 million (21.1%).

Room occupancy rate

The room occupancy rate for hotels, motels and guest houses and serviced apartments combined increased 3.1 percentage points to 58.4% in June quarter 2004 compared with June quarter 2003.

The Australian Capital Territory recorded the highest room occupancy rate for hotels, motels and guest houses and serviced apartments combined with 65.9%. This was followed by Queensland (61.3%) and the Northern Territory (60.0%).

ROOM OCCUPANCY RATES(a), Original—Australia



(a) Room occupancy rates are not subject to a break in series.

LIST OF TABLES

page

HOTELS, MOTELS AND GUEST HOUSES AND SERVICED APARTMENTS

ORIGINAL, SEASONALLY ADJUSTED AND TREND

1 Australia	9
--------------------	---

SUMMARY

2 Australia	10
--------------------	----

STAR GRADING

3 Australia	12
4 New South Wales	14
5 Victoria	16
6 Queensland	18
7 South Australia	20
8 Western Australia	22
9 Tasmania	24
10 Northern Territory	26
11 Australian Capital Territory	28

TOURISM REGIONS

12 New South Wales	30
13 Victoria	32
14 Queensland	34
15 South Australia	36
16 Western Australia	38
17 Tasmania	39
18 Northern Territory and Australian Capital Territory	40

Period	ORIGINAL		SEASONALLY ADJUSTED		TREND	
	Room occupancy rate	Takings from accommodation(a)	Room occupancy rate	Takings from accommodation(a)	Room occupancy rate	Takings from accommodation(a)
	%	'000	%	'000	%	'000
2000						
December Quarter	58.8	1 267 090	57.6	1 206 548	57.6	1 200 168
2001						
March Quarter	57.7	1 218 107	57.6	1 209 089	57.6	1 213 131
June Quarter	55.2	1 111 337	57.9	1 211 774	57.6	1 204 940
September Quarter	58.7	1 226 522	57.4	1 199 987	57.3	1 188 086
December Quarter	57.6	1 209 554	56.6	1 151 566	57.3	1 180 604
2002						
March Quarter	58.6	1 213 991	58.1	1 203 450	57.5	1 186 762
June Quarter	54.8	1 100 074	57.8	1 204 942	58.1	1 203 210
September Quarter	59.6	1 236 869	58.5	1 210 728	58.6	1 219 413
December Quarter	61.7	1 314 053	60.2	1 245 208	58.8	1 224 913
2003						
March Quarter	59.1	1 244 695	59.1	1 237 721	58.8	1 231 917
June Quarter	55.3	1 159 500	58.3	1 272 117	59.4	1 297 080
September Quarter	62.5	1 373 488	61.0	1 340 746	60.5	1 343 109
December Quarter	63.5	1 499 344	62.1	1 421 890	61.4	1 382 559
2004						
March Quarter	61.6	1 398 573	61.1	1 378 662	61.7	1 401 074
June Quarter	58.4	1 277 463	61.6	1 403 593	61.5	1 404 420

(a) Break in time series between the March and June quarters 2003. See Explanatory Notes.

SUMMARY OF HOTELS, MOTELS AND SERVICED APARTMENTS, Australia

<i>Period</i>	<i>Establishments(a)</i> no.	<i>Guest rooms(a)</i> no.	<i>Bed spaces(a)</i> no.	<i>Persons employed(a)</i> no.	<i>Room nights occupied(a)</i> '000	<i>Room occupancy rate</i> %
.....						
LICENSED HOTELS WITH FACILITIES						
2003						
March Quarter	781	77 477	203 876	68 458	4 458	64.0
June Quarter	799	78 089	204 484	69 155	4 109	57.8
September Quarter	794	77 914	203 346	70 105	4 810	67.1
December Quarter	796	78 720	202 962	70 046	4 996	69.4
2004						
March Quarter	791	78 474	202 354	69 472	4 798	67.3
June Quarter	793	78 796	204 856	69 629	4 506	63.2
Year ended June 2003	17 807	62.9
Year ended June 2004	19 111	66.8
.....						
MOTELS AND GUEST HOUSES WITH FACILITIES						
2003						
March Quarter	2 383	83 931	244 433	29 209	3 922	52.0
June Quarter	2 424	85 148	247 803	29 627	3 955	51.1
September Quarter	2 416	85 198	247 709	30 074	4 356	55.6
December Quarter	2 415	85 390	246 107	29 473	4 380	55.9
2004						
March Quarter	2 404	84 903	244 265	29 432	4 137	53.7
June Quarter	2 404	84 532	244 770	29 069	4 023	52.6
Year ended June 2003	16 203	52.8
Year ended June 2004	16 897	54.5
.....						
SERVICED APARTMENTS						
2003						
March Quarter	690	36 070	117 683	12 327	2 120	65.4
June Quarter	772	39 182	128 060	12 966	2 120	59.4
September Quarter	775	39 921	129 429	13 268	2 492	68.3
December Quarter	781	40 351	131 183	13 489	2 525	68.1
2004						
March Quarter	786	40 734	132 240	13 371	2 481	67.0
June Quarter	795	41 104	133 268	13 808	2 278	61.2
Year ended June 2003	8 571	64.3
Year ended June 2004	9 776	66.1
.....						
HOTELS, MOTELS AND SERVICED APARTMENTS						
2003						
March Quarter	3 854	197 478	565 992	109 994	10 501	59.1
June Quarter	3 995	202 419	580 347	111 748	10 184	55.3
September Quarter	3 985	203 033	580 484	113 447	11 658	62.5
December Quarter	3 992	204 461	580 252	113 008	11 901	63.5
2004						
March Quarter	3 981	204 111	578 859	112 275	11 417	61.6
June Quarter	3 992	204 432	582 894	112 506	10 808	58.4
Year ended June 2003	42 581	58.9
Year ended June 2004	45 784	61.5

.. not applicable

(a) Break in time series between the March and June quarters 2003. See Explanatory Notes.

Period	Guest nights(a)	Bed occupancy rate	Guest arrivals(a)	Average length of stay	Takings from accommodation(a)
	'000	%	'000	days	\$'000
.....					
LICENSED HOTELS WITH FACILITIES					
2003					
March Quarter	7 381	40.3	3 143	2.3	621 399
June Quarter	6 607	35.5	2 876	2.3	553 849
September Quarter	7 940	42.4	3 340	2.4	664 512
December Quarter	8 298	44.7	3 590	2.3	759 603
2004					
March Quarter	7 940	43.2	3 343	2.4	691 864
June Quarter	7 289	39.4	3 209	2.3	627 765
Year ended June 2003	29 413	39.6	12 653	2.3	2 452 807
Year ended June 2004	31 467	42.4	13 482	2.3	2 743 744
.....					
MOTELS AND GUEST HOUSES WITH FACILITIES					
2003					
March Quarter	6 984	31.8	3 849	1.8	355 991
June Quarter	6 813	30.2	3 831	1.8	351 004
September Quarter	7 706	33.8	4 333	1.8	399 637
December Quarter	7 815	34.6	4 359	1.8	407 394
2004					
March Quarter	7 379	33.3	4 067	1.8	386 199
June Quarter	6 985	31.6	3 984	1.8	368 779
Year ended June 2003	28 510	31.9	15 991	1.8	1 454 922
Year ended June 2004	29 885	33.3	16 743	1.8	1 562 009
.....					
SERVICED APARTMENTS					
2003					
March Quarter	4 701	44.4	1 268	3.7	267 305
June Quarter	4 571	39.2	1 293	3.5	254 647
September Quarter	5 447	46.0	1 495	3.6	309 339
December Quarter	5 701	47.3	1 589	3.6	332 348
2004					
March Quarter	5 602	46.7	1 513	3.7	320 510
June Quarter	4 903	40.6	1 420	3.5	280 920
Year ended June 2003	18 750	42.9	5 127	3.7	1 047 389
Year ended June 2004	21 654	45.1	6 017	3.6	1 243 116
.....					
HOTELS, MOTELS AND SERVICED APARTMENTS					
2003					
March Quarter	19 066	37.5	8 260	2.3	1 244 695
June Quarter	17 991	34.1	8 000	2.2	1 159 500
September Quarter	21 093	39.6	9 167	2.3	1 373 488
December Quarter	21 814	41.0	9 539	2.3	1 499 344
2004					
March Quarter	20 921	39.8	8 923	2.3	1 398 573
June Quarter	19 177	36.4	8 613	2.2	1 277 463
Year ended June 2003	76 673	37.0	33 772	2.3	4 955 118
Year ended June 2004	83 005	39.2	36 241	2.3	5 548 869

(a) Break in time series between the March and June quarters 2003. See Explanatory Notes.

HOTELS, MOTELS AND SERVICED APARTMENTS, Star grading(a)—Australia

Period	Licensed hotels with facilities	Motels and guest houses	Serviced apartments	STAR GRADING						Ungraded	Total
				1	2	3	4	5			
ESTABLISHMENTS, CAPACITY AND EMPLOYMENT (no.)											
June Quarter 2003											
Establishments	799	2 424	772	69	378	1 874	1 308	121	245	3 995	
Guest rooms	78 089	85 148	39 182	2 782	11 522	68 127	88 423	24 190	7 375	202 419	
Bed spaces	204 484	247 803	128 060	8 609	33 535	200 080	256 749	61 118	20 256	580 347	
Persons employed	69 155	29 627	12 966	684	4 799	23 550	43 779	35 416	3 520	111 748	
June Quarter 2004											
Establishments	793	2 404	795	44	318	1 917	1 379	115	219	3 992	
Guest rooms	78 796	84 532	41 104	1 344	10 210	70 122	92 017	23 770	6 969	204 432	
Bed spaces	204 856	244 770	133 268	4 664	28 872	205 475	265 576	59 562	18 745	582 894	
Persons employed	69 629	29 069	13 808	471	4 137	24 391	46 457	33 820	3 230	112 506	
ROOM NIGHTS OCCUPIED ('000)											
2003											
June Quarter	4 109.4	3 954.8	2 119.6	115.4	414.3	3 178.1	4 792.9	1 400.4	282.7	10 183.8	
2004											
April	1 510.1	1 378.8	786.7	15.4	136.9	1 166.4	1 782.6	487.3	87.0	3 675.6	
May	1 533.6	1 342.8	738.8	15.2	131.1	1 109.5	1 764.3	506.4	88.5	3 615.1	
June	1 462.6	1 301.4	753.0	16.9	131.8	1 080.1	1 725.9	468.2	94.0	3 516.9	
June Quarter	4 506.3	4 022.9	2 278.5	47.6	399.8	3 356.0	5 272.9	1 461.9	269.5	10 807.7	
ROOM OCCUPANCY RATE (%)											
2003											
June Quarter	57.8	51.1	59.4	45.6	39.5	51.3	59.6	63.6	42.2	55.3	
2004											
April	64.3	54.7	64.2	40.2	45.3	55.9	64.6	68.5	44.7	60.3	
May	63.2	51.6	58.4	38.4	42.0	51.4	61.9	68.9	44.2	57.4	
June	62.0	51.5	61.1	42.0	43.0	51.5	62.6	65.7	45.3	57.4	
June Quarter	63.2	52.6	61.2	40.2	43.4	52.9	63.0	67.7	44.8	58.4	
GUEST NIGHTS ('000)											
2003											
June Quarter	6 606.5	6 813.4	4 570.6	195.6	716.5	5 795.5	8 540.9	2 266.4	475.7	17 990.5	
2004											
April	2 550.0	2 516.8	1 814.6	29.8	245.4	2 227.8	3 413.5	812.1	153.0	6 881.5	
May	2 388.0	2 232.3	1 501.1	29.3	223.2	1 931.5	3 010.8	781.0	145.7	6 121.4	
June	2 351.1	2 235.9	1 587.5	35.9	233.9	1 959.1	3 055.5	735.2	154.9	6 174.5	
June Quarter	7 289.1	6 985.0	4 903.2	95.0	702.5	6 118.3	9 479.7	2 328.3	453.5	19 177.3	
BED OCCUPANCY RATE (%)											
2003											
June Quarter	35.5	30.2	39.2	25.0	23.5	31.8	36.6	40.7	25.9	34.1	
2004											
April	41.8	34.5	45.7	22.9	28.8	36.4	42.9	45.6	29.8	39.7	
May	37.9	29.7	36.6	21.9	25.3	30.6	36.6	42.4	27.5	34.2	
June	38.3	30.5	39.7	25.7	27.0	31.9	38.4	41.1	27.8	35.4	
June Quarter	39.4	31.6	40.6	23.5	27.0	32.9	39.3	43.0	28.3	36.4	

(a) Star grade classifications have been revised. See Explanatory Notes.

HOTELS, MOTELS AND SERVICED APARTMENTS, Star grading(a)—Australia *continued*

Period	Licensed hotels with facilities	Motels and guest houses	Serviced apartments	STAR GRADING						Ungraded	Total
				1	2	3	4	5			
GUEST ARRIVALS ('000)											
2003											
June Quarter	2 875.8	3 831.0	1 293.1	126.8	394.3	2 897.9	3 455.1	915.4	210.3	7 999.9	
2004											
April	1 087.1	1 429.7	507.3	16.2	140.4	1 122.6	1 370.6	309.9	64.5	3 024.1	
May	1 074.0	1 277.7	445.9	15.7	127.6	988.7	1 283.1	320.0	62.6	2 797.6	
June	1 047.8	1 276.6	466.5	17.6	129.7	997.6	1 281.1	297.8	67.1	2 790.9	
June Quarter	3 208.8	3 984.0	1 419.8	49.4	397.8	3 108.8	3 934.8	927.6	194.1	8 612.6	
AVERAGE LENGTH OF STAY (days)											
2003											
June Quarter	2.3	1.8	3.5	1.5	1.8	2.0	2.5	2.5	2.3	2.2	
2004											
April	2.3	1.8	3.6	1.8	1.7	2.0	2.5	2.6	2.4	2.3	
May	2.2	1.7	3.4	1.9	1.7	2.0	2.3	2.4	2.3	2.2	
June	2.2	1.8	3.4	2.0	1.8	2.0	2.4	2.5	2.3	2.2	
June Quarter	2.3	1.8	3.5	1.9	1.8	2.0	2.4	2.5	2.3	2.2	
TAKINGS FROM ACCOMMODATION (\$'000)											
2003											
June Quarter	553 849	351 004	254 647	6 557	27 236	267 897	574 453	258 376	24 981	1 159 500	
2004											
April	212 716	128 499	100 985	1 184	9 216	104 348	223 649	95 397	8 406	442 200	
May	214 008	121 800	88 977	1 193	8 610	94 832	215 787	96 224	8 139	424 785	
June	201 042	118 479	90 958	1 444	9 024	93 753	209 291	88 203	8 763	410 479	
June Quarter	627 765	368 779	280 920	3 822	26 850	292 932	648 727	279 823	25 309	1 277 463	
AVERAGE TAKINGS PER ROOM NIGHT OCCUPIED (\$)											
2003											
June Quarter	134.8	88.8	120.1	56.8	65.7	84.3	119.9	184.5	88.4	113.9	
2004											
April	140.9	93.2	128.4	76.8	67.3	89.5	125.5	195.8	96.6	120.3	
May	139.5	90.7	120.4	78.4	65.7	85.5	122.3	190.0	91.9	117.5	
June	137.5	91.0	120.8	85.3	68.5	86.8	121.3	188.4	93.2	116.7	
June Quarter	139.3	91.7	123.3	80.3	67.2	87.3	123.0	191.4	93.9	118.2	
AVERAGE TAKINGS PER AVAILABLE ROOM NIGHT (\$)											
2003											
June Quarter	77.9	45.3	71.4	25.9	26.0	43.2	71.4	117.4	37.3	63.0	
2004											
April	90.6	51.0	82.4	30.9	30.5	50.0	81.1	134.1	43.2	72.6	
May	88.2	46.8	70.3	30.1	27.6	44.0	75.7	130.9	40.7	67.5	
June	85.2	46.9	73.8	35.8	29.5	44.7	75.9	123.7	42.2	67.1	
June Quarter	88.0	48.2	75.4	32.3	29.1	46.2	77.6	129.6	42.0	69.0	

(a) Star grade classifications have been revised. See Explanatory Notes.

HOTELS, MOTELS AND SERVICED APARTMENTS, Star grading(a)—NSW

Period	Licensed hotels with facilities	Motels and guest houses	Serviced apartments	STAR GRADING						Ungraded	Total
				1	2	3	4	5			
ESTABLISHMENTS, CAPACITY AND EMPLOYMENT (no.)											
June Quarter 2003											
Establishments	202	992	156	36	136	733	338	26	81	1 350	
Guest rooms	22 805	32 828	8 149	1 610	4 047	24 477	24 448	6 877	2 323	63 782	
Bed spaces	56 065	96 127	25 792	5 479	11 812	71 323	66 828	16 131	6 411	177 984	
Persons employed	19 774	10 846	2 879	256	1 531	7 619	12 700	10 384	1 009	33 499	
June Quarter 2004											
Establishments	199	989	162	22	107	766	357	27	71	1 350	
Guest rooms	23 064	32 554	8 703	861	3 407	25 566	25 497	6 954	2 036	64 321	
Bed spaces	57 047	94 127	27 297	3 292	9 933	73 300	69 883	16 260	5 803	178 471	
Persons employed	18 919	10 734	2 874	193	1 156	7 940	13 085	9 302	851	32 527	
ROOM NIGHTS OCCUPIED ('000)											
2003											
June Quarter	1 254.7	1 514.9	445.9	63.1	152.9	1 135.2	1 392.3	393.9	78.1	3 215.5	
2004											
April	474.3	538.6	169.9	9.6	50.7	426.8	524.6	148.8	22.3	1 182.8	
May	477.6	507.7	152.4	9.6	44.8	400.4	514.8	148.4	19.6	1 137.6	
June	451.2	478.8	146.0	10.6	45.0	378.8	482.8	138.0	20.8	1 076.1	
June Quarter	1 403.1	1 525.1	468.4	29.8	140.5	1 206.1	1 522.3	435.1	62.7	3 396.6	
ROOM OCCUPANCY RATE (%)											
2003											
June Quarter	60.5	50.8	60.1	43.1	41.5	51.0	62.6	62.9	37.2	55.4	
2004											
April	70.0	55.7	65.7	40.4	51.5	56.4	68.6	71.6	43.2	62.2	
May	68.2	50.9	57.0	38.8	44.1	51.2	65.1	69.1	37.3	57.9	
June	65.4	49.1	55.9	41.1	44.1	49.5	63.1	66.1	35.0	55.9	
June Quarter	67.8	51.9	59.5	40.1	46.5	52.4	65.6	68.9	38.3	58.6	
GUEST NIGHTS ('000)											
2003											
June Quarter	1 976.2	2 647.0	893.5	105.9	270.3	2 035.1	2 359.8	611.9	133.8	5 516.7	
2004											
April	783.9	991.1	378.1	20.4	94.1	799.4	956.7	241.3	41.1	2 153.0	
May	736.9	847.2	299.3	20.6	80.1	680.8	840.8	226.7	34.4	1 883.4	
June	718.8	822.0	297.2	26.2	83.6	668.0	808.4	214.7	37.1	1 838.0	
June Quarter	2 239.6	2 660.3	974.5	67.2	257.8	2 148.2	2 605.9	682.7	112.6	5 874.4	
BED OCCUPANCY RATE (%)											
2003											
June Quarter	38.7	30.3	38.1	21.2	25.1	31.4	38.8	41.7	23.1	34.1	
2004											
April	47.1	35.5	46.9	23.1	33.1	36.9	45.6	49.7	29.4	40.9	
May	42.8	29.4	35.9	22.5	27.3	30.4	38.8	45.2	24.2	34.7	
June	42.1	29.1	36.3	26.5	28.1	30.4	38.6	44.0	21.9	34.4	
June Quarter	44.0	31.3	39.7	24.1	29.4	32.6	41.0	46.3	24.9	36.6	

(a) Star grade classifications have been revised. See Explanatory Notes.

Period	Licensed hotels with facilities	Motels and guest houses	Serviced apartments	STAR GRADING					Ungraded	Total
				1	2	3	4	5		
GUEST ARRIVALS ('000)										
2003										
June Quarter	869.7	1 612.4	288.1	67.2	157.1	1 152.3	1 068.8	256.0	68.8	2 770.2
2004										
April	315.0	612.5	117.8	11.4	54.4	459.0	410.8	92.6	17.0	1 045.2
May	306.7	526.3	98.9	11.0	46.7	394.6	373.3	91.5	14.9	931.9
June	298.6	518.8	101.7	12.5	48.6	392.8	364.9	84.3	15.9	919.2
June Quarter	920.3	1 657.6	318.4	35.0	149.7	1 246.4	1 149.0	268.4	47.8	2 896.3
AVERAGE LENGTH OF STAY (days)										
2003										
June Quarter	2.3	1.6	3.1	1.6	1.7	1.8	2.2	2.4	1.9	2.0
2004										
April	2.5	1.6	3.2	1.8	1.7	1.7	2.3	2.6	2.4	2.1
May	2.4	1.6	3.0	1.9	1.7	1.7	2.3	2.5	2.3	2.0
June	2.4	1.6	2.9	2.1	1.7	1.7	2.2	2.5	2.3	2.0
June Quarter	2.4	1.6	3.1	1.9	1.7	1.7	2.3	2.5	2.4	2.0
TAKINGS FROM ACCOMMODATION (\$'000)										
2003										
June Quarter	182 360	136 663	62 510	3 487	10 674	98 776	181 529	79 770	7 297	381 533
2004										
April	75 146	51 146	24 931	808	3 527	38 707	72 232	33 436	2 512	151 222
May	75 643	46 574	21 183	818	3 053	35 124	69 203	33 182	2 020	143 400
June	70 172	44 089	20 011	1 025	3 301	33 654	64 023	30 034	2 236	134 272
June Quarter	220 961	141 808	66 126	2 652	9 881	107 485	205 458	96 651	6 768	428 895
AVERAGE TAKINGS PER ROOM NIGHT OCCUPIED (\$)										
2003										
June Quarter	145.3	90.2	140.2	55.3	69.8	87.0	130.4	202.5	93.4	118.7
2004										
April	158.4	95.0	146.7	83.8	69.6	90.7	137.7	224.8	112.7	127.8
May	158.4	91.7	139.0	85.4	68.1	87.7	134.4	223.6	102.9	126.1
June	155.5	92.1	137.0	96.5	73.3	88.8	132.6	217.7	107.4	124.8
June Quarter	157.5	93.0	141.2	88.9	70.3	89.1	135.0	222.1	107.9	126.3
AVERAGE TAKINGS PER AVAILABLE ROOM NIGHT (\$)										
2003										
June Quarter	87.9	45.8	84.3	23.8	29.0	44.4	81.6	127.5	34.7	65.8
2004										
April	110.9	52.9	96.4	33.9	35.9	51.2	94.4	160.9	48.7	79.5
May	108.0	46.7	79.2	33.2	30.1	44.9	87.6	154.5	38.4	73.0
June	101.7	45.2	76.6	39.7	32.3	44.0	83.7	144.0	37.5	69.7
June Quarter	106.8	48.2	84.0	35.7	32.7	46.7	88.6	153.1	41.3	74.0

(a) Star grade classifications have been revised. See Explanatory Notes.

HOTELS, MOTELS AND SERVICED APARTMENTS, Star grading(a)—Vic.

Period	Licensed hotels with facilities	Motels and guest houses	Serviced apartments	STAR GRADING						Ungraded	Total
				1	2	3	4	5			
ESTABLISHMENTS, CAPACITY AND EMPLOYMENT (no.)											
June Quarter 2003											
Establishments	137	508	105	6	52	358	290	23	21	750	
Guest rooms	13 223	16 044	5 635	336	1 457	11 792	15 939	4 659	719	34 902	
Bed spaces	29 987	46 487	17 170	999	4 417	33 119	43 111	9 706	2 292	93 644	
Persons employed	13 788	5 632	1 804	105	588	3 850	7 179	9 011	491	21 224	
June Quarter 2004											
Establishments	138	500	108	2	46	340	312	22	24	746	
Guest rooms	13 771	15 944	5 758	np	1 362	11 441	17 317	4 528	np	35 473	
Bed spaces	31 674	46 246	18 092	np	3 968	32 799	47 220	9 649	np	96 012	
Persons employed	14 560	5 432	1 653	np	569	3 504	7 966	9 048	np	21 645	
ROOM NIGHTS OCCUPIED ('000)											
2003											
June Quarter	696.2	679.4	319.7	18.0	37.4	504.2	823.4	284.4	28.0	1 695.2	
2004											
April	261.0	243.7	111.5	np	18.2	176.2	313.7	99.1	np	616.1	
May	277.1	225.4	114.2	np	np	162.1	322.5	107.7	9.4	616.6	
June	259.3	210.2	113.5	np	np	150.1	311.5	98.2	8.7	583.1	
June Quarter	797.4	679.4	339.1	np	47.3	488.4	947.7	305.0	np	1 815.9	
ROOM OCCUPANCY RATE (%)											
2003											
June Quarter	57.9	46.6	62.3	58.8	28.2	47.0	56.8	67.1	42.8	53.4	
2004											
April	63.3	51.4	64.8	np	44.7	52.1	60.4	72.9	np	58.2	
May	65.1	46.0	64.6	np	np	46.4	60.2	76.8	40.2	56.4	
June	62.9	44.3	65.7	np	np	44.3	60.0	72.3	37.1	55.0	
June Quarter	63.8	47.2	65.0	np	38.2	47.6	60.2	74.0	np	56.5	
GUEST NIGHTS ('000)											
2003											
June Quarter	1 055.8	1 165.6	609.4	33.2	68.5	890.9	1 383.6	407.7	46.9	2 830.8	
2004											
April	404.5	445.2	228.5	np	33.0	327.8	556.6	145.2	np	1 078.2	
May	402.6	372.0	209.3	np	np	278.6	513.8	150.4	14.7	984.0	
June	391.0	363.5	216.1	np	np	272.8	518.8	139.4	14.0	970.6	
June Quarter	1 198.1	1 180.8	653.9	np	84.3	879.2	1 589.2	435.0	np	3 032.8	
BED OCCUPANCY RATE (%)											
2003											
June Quarter	38.7	27.6	39.0	36.6	17.1	29.6	35.3	46.2	22.5	33.2	
2004											
April	42.7	32.4	42.3	np	27.8	33.9	39.3	50.2	np	37.7	
May	41.2	26.2	37.9	np	np	27.9	35.2	50.3	21.9	33.3	
June	41.3	26.4	39.8	np	np	28.2	36.6	48.2	21.0	33.9	
June Quarter	41.7	28.3	40.0	np	23.3	29.9	37.0	49.5	np	34.9	

np not available for publication but included in totals where applicable, unless otherwise indicated

(a) Star grade classifications have been revised. See Explanatory Notes.

Period	Licensed hotels with facilities	Motels and guest houses	Serviced apartments	STAR GRADING						Ungraded	Total
				1	2	3	4	5			
GUEST ARRIVALS ('000)											
2003											
June Quarter	499.3	684.0	195.9	27.4	37.3	469.3	637.9	189.3	18.0	1 379.2	
2004											
April	183.7	256.7	66.2	np	19.8	170.4	246.1	62.9	np	506.6	
May	189.5	218.9	64.3	np	np	146.3	236.6	66.5	6.8	472.7	
June	182.4	209.8	64.5	np	np	140.2	232.0	61.5	6.7	456.7	
June Quarter	555.5	685.4	195.1	np	52.3	456.8	714.7	190.8	np	1 436.0	
AVERAGE LENGTH OF STAY (days)											
2003											
June Quarter	2.1	1.7	3.1	1.2	1.8	1.9	2.2	2.2	2.6	2.1	
2004											
April	2.2	1.7	3.4	np	1.7	1.9	2.3	2.3	np	2.1	
May	2.1	1.7	3.3	np	np	1.9	2.2	2.3	2.2	2.1	
June	2.1	1.7	3.4	np	np	1.9	2.2	2.3	2.1	2.1	
June Quarter	2.2	1.7	3.4	np	1.6	1.9	2.2	2.3	np	2.1	
TAKINGS FROM ACCOMMODATION (\$'000)											
2003											
June Quarter	100 098	63 000	43 036	1 034	2 252	42 947	102 033	54 451	3 417	206 134	
2004											
April	36 621	23 510	15 155	np	1 149	15 410	39 422	18 172	np	75 286	
May	39 417	21 405	14 922	np	np	13 697	40 153	19 817	1 173	75 743	
June	36 557	20 224	14 763	np	np	13 010	38 745	17 875	1 041	71 543	
June Quarter	112 595	65 138	44 840	np	2 897	42 117	118 321	55 864	np	222 573	
AVERAGE TAKINGS PER ROOM NIGHT OCCUPIED (\$)											
2003											
June Quarter	143.8	92.7	134.6	57.5	60.3	85.2	123.9	191.5	122.2	121.6	
2004											
April	140.3	96.5	136.0	np	63.0	87.4	125.7	183.4	np	122.2	
May	142.3	95.0	130.7	np	np	84.5	124.5	183.9	125.1	122.8	
June	141.0	96.2	130.1	np	np	86.7	124.4	182.0	119.8	122.7	
June Quarter	141.2	95.9	132.2	np	61.3	86.2	124.9	183.1	np	122.6	
AVERAGE TAKINGS PER AVAILABLE ROOM NIGHT (\$)											
2003											
June Quarter	83.2	43.2	83.9	33.8	17.0	40.0	70.4	128.4	52.2	64.9	
2004											
April	88.9	49.5	88.2	np	28.1	45.5	75.9	133.8	np	71.1	
May	92.6	43.7	84.4	np	np	39.2	74.9	141.2	50.3	69.3	
June	88.7	42.6	85.5	np	np	38.4	74.6	131.6	44.5	67.5	
June Quarter	90.1	45.2	86.0	np	23.4	41.0	75.1	135.6	np	69.3	

np not available for publication but included in totals where applicable, unless otherwise indicated

(a) Star grade classifications have been revised. See Explanatory Notes.

HOTELS, MOTELS AND SERVICED APARTMENTS, Star grading(a)—Qld

Period	Licensed hotels with facilities	Motels and guest houses	Serviced apartments	STAR GRADING						Ungraded	Total
				1	2	3	4	5			
ESTABLISHMENTS, CAPACITY AND EMPLOYMENT (no.)											
June Quarter 2003											
Establishments	170	516	322	12	83	411	411	42	49	1 008	
Guest rooms	20 682	18 436	15 421	329	2 117	14 962	28 443	7 187	1 501	54 539	
Bed spaces	63 311	54 307	51 198	923	6 348	46 608	89 138	21 522	4 277	168 816	
Persons employed	19 790	6 658	4 574	99	963	5 166	13 102	11 060	632	31 022	
June Quarter 2004											
Establishments	171	512	332	10	75	427	429	38	36	1 015	
Guest rooms	20 501	18 407	15 993	191	2 055	16 116	28 679	6 688	1 172	54 901	
Bed spaces	61 536	53 942	52 873	491	6 101	50 154	88 636	19 878	3 091	168 351	
Persons employed	19 923	6 473	5 323	68	946	6 014	13 670	10 472	549	31 719	
ROOM NIGHTS OCCUPIED ('000)											
2003											
June Quarter	1 058.5	972.3	816.1	15.0	87.1	784.4	1 491.5	401.0	67.9	2 846.9	
2004											
April	386.0	319.1	300.8	2.0	29.8	285.2	544.0	127.7	17.1	1 005.8	
May	385.8	339.7	279.5	2.2	30.5	284.5	532.6	136.3	18.8	1 005.0	
June	386.9	356.3	302.1	2.4	32.2	302.0	559.3	128.1	21.3	1 045.3	
June Quarter	1 158.6	1 015.1	882.3	6.7	92.5	871.7	1 635.8	392.2	57.2	3 056.1	
ROOM OCCUPANCY RATE (%)											
2003											
June Quarter	56.2	58.0	58.2	50.1	45.2	57.6	57.6	61.3	49.7	57.4	
2004											
April	62.8	57.9	62.9	35.7	48.3	59.0	63.3	63.7	50.9	61.2	
May	60.7	59.6	56.6	37.5	47.9	57.0	60.0	65.8	54.3	59.1	
June	62.9	64.7	63.0	42.5	52.2	62.5	65.1	63.9	60.7	63.5	
June Quarter	62.1	60.7	60.8	38.5	49.4	59.4	62.8	64.4	55.4	61.3	
GUEST NIGHTS ('000)											
2003											
June Quarter	1 919.4	1 668.3	1 954.0	26.3	148.2	1 538.8	2 972.8	734.2	121.3	5 541.7	
2004											
April	744.6	577.8	760.0	3.1	52.8	583.7	1 172.0	243.1	27.7	2 082.4	
May	675.7	563.5	625.9	3.1	51.6	526.7	1 018.3	235.0	30.3	1 865.1	
June	696.2	616.9	697.1	3.6	57.4	585.1	1 104.0	224.8	35.2	2 010.2	
June Quarter	2 116.5	1 758.2	2 083.0	9.8	161.9	1 695.5	3 294.2	702.9	93.3	5 957.7	
BED OCCUPANCY RATE (%)											
2003											
June Quarter	33.3	33.8	41.9	31.4	25.7	36.3	36.6	37.5	31.2	36.1	
2004											
April	40.3	35.8	48.1	21.2	28.9	38.8	44.1	40.8	32.2	41.3	
May	35.4	33.8	38.3	20.3	27.3	33.9	37.1	38.1	34.1	35.8	
June	37.7	38.2	43.9	24.6	31.4	38.9	41.6	37.7	38.0	39.8	
June Quarter	37.8	35.9	43.4	22.0	29.2	37.2	40.9	38.9	34.8	39.0	

(a) Star grade classifications have been revised. See Explanatory Notes.

Period	Licensed hotels with facilities	Motels and guest houses	Serviced apartments	STAR GRADING						Ungraded	Total
				1	2	3	4	5			
GUEST ARRIVALS ('000)											
2003											
June Quarter	709.3	828.7	463.7	12.0	82.9	620.5	985.9	254.5	46.0	2 001.7	
2004											
April	285.5	294.6	178.5	1.4	31.1	236.5	398.8	81.3	9.5	758.6	
May	284.9	292.0	160.2	1.5	30.0	224.0	385.6	84.9	11.1	737.1	
June	287.5	316.2	173.3	1.7	29.1	247.1	405.0	81.1	13.0	777.0	
June Quarter	857.9	902.8	512.0	4.6	90.2	707.5	1 189.4	247.4	33.5	2 272.6	
AVERAGE LENGTH OF STAY (days)											
2003											
June Quarter	2.7	2.0	4.2	2.2	1.8	2.5	3.0	2.9	2.6	2.8	
2004											
April	2.6	2.0	4.3	2.3	1.7	2.5	2.9	3.0	2.9	2.7	
May	2.4	1.9	3.9	2.1	1.7	2.4	2.6	2.8	2.7	2.5	
June	2.4	2.0	4.0	2.1	2.0	2.4	2.7	2.8	2.7	2.6	
June Quarter	2.5	1.9	4.1	2.2	1.8	2.4	2.8	2.8	2.8	2.6	
TAKINGS FROM ACCOMMODATION (\$'000)											
2003											
June Quarter	146 824	81 124	85 259	886	5 567	62 421	162 923	75 725	5 685	313 207	
2004											
April	55 882	28 300	35 069	121	2 048	25 810	63 421	26 371	1 479	119 252	
May	53 073	29 374	29 283	128	1 940	23 477	58 683	25 930	1 572	111 730	
June	52 132	31 158	32 787	150	2 067	25 549	61 853	24 518	1 939	116 077	
June Quarter	161 087	88 832	97 140	400	6 055	74 836	183 957	76 820	4 991	347 059	
AVERAGE TAKINGS PER ROOM NIGHT OCCUPIED (\$)											
2003											
June Quarter	138.7	83.4	104.5	59.1	63.9	79.6	109.2	188.9	83.8	110.0	
2004											
April	144.8	88.7	116.6	59.4	68.8	90.5	116.6	206.4	86.6	118.6	
May	137.6	86.5	104.8	57.9	63.6	82.5	110.2	190.2	83.5	111.2	
June	134.7	87.4	108.5	61.8	64.2	84.6	110.6	191.4	90.9	111.0	
June Quarter	139.0	87.5	110.1	59.8	65.5	85.8	112.5	195.9	87.2	113.6	
AVERAGE TAKINGS PER AVAILABLE ROOM NIGHT (\$)											
2003											
June Quarter	78.0	48.4	60.8	29.6	28.9	45.8	62.9	115.8	41.6	63.1	
2004											
April	90.9	51.4	73.3	21.2	33.2	53.4	73.8	131.4	44.1	72.5	
May	83.5	51.6	59.3	21.7	30.4	47.0	66.1	125.1	45.4	65.8	
June	84.8	56.5	68.3	26.3	33.5	52.8	72.0	122.2	55.2	70.5	
June Quarter	86.3	53.1	66.9	23.0	32.4	51.0	70.6	126.2	48.3	69.6	

(a) Star grade classifications have been revised. See Explanatory Notes.

HOTELS, MOTELS AND SERVICED APARTMENTS, Star grading(a)—SA

Period	Licensed hotels with facilities	Motels and guest houses	Serviced apartments	STAR GRADING						Total
				1	2	3	4	5	Ungraded	
ESTABLISHMENTS, CAPACITY AND EMPLOYMENT (no.)										
June Quarter 2003										
Establishments	66	148	35	7	45	114	66	9	8	249
Guest rooms	4 749	5 364	1 651	np	1 677	3 664	4 024	2 033	np	11 764
Bed spaces	11 302	15 719	5 724	np	4 500	10 822	11 810	4 604	np	32 745
Persons employed	3 986	2 281	612	np	923	1 676	2 637	1 442	np	6 879
June Quarter 2004										
Establishments	67	145	35	7	37	118	66	9	10	247
Guest rooms	4 896	5 231	1 783	np	1 460	3 729	4 083	np	451	11 910
Bed spaces	11 831	15 548	6 084	np	3 779	10 981	12 367	np	1 229	33 463
Persons employed	4 231	2 212	644	np	808	1 762	2 628	np	138	7 087
ROOM NIGHTS OCCUPIED ('000)										
2003										
June Quarter	231.3	244.6	85.0	np	55.2	164.6	212.0	116.1	np	560.9
2004										
April	81.5	80.9	35.0	np	15.7	60.8	72.3	np	4.8	197.4
May	87.3	80.0	34.1	np	16.8	58.8	73.6	np	5.7	201.4
June	77.4	70.4	31.1	np	15.6	50.1	65.0	np	5.8	178.9
June Quarter	246.3	231.3	100.2	np	48.1	169.6	211.0	np	16.3	577.8
ROOM OCCUPANCY RATE (%)										
2003										
June Quarter	53.5	50.1	56.6	np	36.1	49.4	57.9	62.8	np	52.4
2004										
April	55.5	52.1	65.4	np	35.9	54.3	59.7	np	35.8	55.5
May	57.5	49.8	61.8	np	37.1	50.8	58.9	np	41.0	54.8
June	52.7	45.3	58.1	np	35.5	44.8	53.7	np	42.6	50.3
June Quarter	55.3	49.1	61.8	np	36.2	50.0	57.5	np	39.8	53.5
GUEST NIGHTS ('000)										
2003										
June Quarter	336.7	410.0	164.1	np	91.1	288.1	353.1	157.5	np	910.9
2004										
April	127.0	144.1	70.1	np	27.4	110.9	129.7	np	9.4	341.3
May	126.7	129.4	61.4	np	26.3	98.3	119.7	np	9.9	317.4
June	112.9	114.5	56.3	np	25.3	83.7	106.8	np	10.1	283.7
June Quarter	366.6	388.0	187.8	np	79.0	293.0	356.2	np	29.5	942.4
BED OCCUPANCY RATE (%)										
2003										
June Quarter	32.7	28.7	31.5	np	22.3	29.3	32.9	37.6	np	30.6
2004										
April	35.8	31.2	38.4	np	24.1	33.7	35.4	np	25.6	34.2
May	34.5	27.1	32.5	np	22.4	28.9	31.6	np	26.0	30.7
June	31.8	24.8	30.9	np	22.3	25.4	29.2	np	27.4	28.4
June Quarter	34.1	27.7	33.9	np	23.0	29.3	32.1	np	26.3	31.1

np not available for publication but included in totals where applicable, unless otherwise indicated

(a) Star grade classifications have been revised. See Explanatory Notes.

Period	Licensed hotels with facilities	Motels and guest houses	Serviced apartments	STAR GRADING						Ungraded	Total
				1	2	3	4	5			
GUEST ARRIVALS ('000)											
2003											
June Quarter	178.7	232.7	45.0	np	51.6	157.9	151.9	84.2	np	456.4	
2004											
April	58.5	81.2	22.2	np	14.3	59.5	55.7	np	3.8	161.9	
May	59.0	73.5	19.8	np	14.5	52.9	50.9	np	4.2	152.3	
June	55.0	65.0	19.3	np	13.9	47.3	47.5	np	4.2	139.3	
June Quarter	172.5	219.6	61.3	np	42.7	159.7	154.0	np	12.1	453.5	
AVERAGE LENGTH OF STAY (days)											
2003											
June Quarter	1.9	1.8	3.6	np	1.8	1.8	2.3	1.9	np	2.0	
2004											
April	2.2	1.8	3.2	np	1.9	1.9	2.3	np	2.5	2.1	
May	2.1	1.8	3.1	np	1.8	1.9	2.4	np	2.4	2.1	
June	2.1	1.8	2.9	np	1.8	1.8	2.3	np	2.4	2.0	
June Quarter	2.1	1.8	3.1	np	1.9	1.8	2.3	np	2.4	2.1	
TAKINGS FROM ACCOMMODATION (\$'000)											
2003											
June Quarter	26 245	21 283	9 226	np	3 312	13 089	23 395	16 012	np	56 754	
2004											
April	9 539	7 486	4 188	np	1 057	4 965	8 548	np	592	21 214	
May	9 929	7 168	4 003	np	1 125	4 671	8 404	np	685	21 100	
June	8 810	6 293	3 491	np	1 047	3 913	7 381	np	695	18 593	
June Quarter	28 277	20 947	11 682	np	3 230	13 550	24 334	np	1 972	60 907	
AVERAGE TAKINGS PER ROOM NIGHT OCCUPIED (\$)											
2003											
June Quarter	113.5	87.0	108.5	np	60.0	79.5	110.4	137.9	np	101.2	
2004											
April	117.0	92.5	119.7	np	67.2	81.7	118.2	np	122.3	107.4	
May	113.7	89.6	117.3	np	66.9	79.5	114.1	np	119.4	104.7	
June	113.8	89.4	112.4	np	67.3	78.1	113.5	np	120.5	103.9	
June Quarter	114.8	90.6	116.6	np	67.1	79.9	115.3	np	120.6	105.4	
AVERAGE TAKINGS PER AVAILABLE ROOM NIGHT (\$)											
2003											
June Quarter	60.7	43.6	61.4	np	21.7	39.3	63.9	86.6	np	53.0	
2004											
April	64.9	48.2	78.3	np	24.1	44.4	70.6	np	43.8	59.6	
May	65.4	44.6	72.4	np	24.9	40.4	67.2	np	49.0	57.4	
June	60.0	40.5	65.3	np	23.9	35.0	61.0	np	51.3	52.3	
June Quarter	63.5	44.4	72.0	np	24.3	39.9	66.3	np	48.0	56.4	

np not available for publication but included in totals where applicable, unless otherwise indicated

(a) Star grade classifications have been revised. See Explanatory Notes.

HOTELS, MOTELS AND SERVICED APARTMENTS, Star grading(a)—WA

Period	Licensed hotels with facilities	Motels and guest houses	Serviced apartments	STAR GRADING						Ungraded	Total
				1	2	3	4	5			
ESTABLISHMENTS, CAPACITY AND EMPLOYMENT (no.)											
June Quarter 2003											
Establishments	130	131	84	2	21	135	109	17	61	345	
Guest rooms	9 583	5 788	4 618	np	np	6 999	7 573	2 831	1 918	19 989	
Bed spaces	24 257	15 513	15 695	np	np	19 250	22 308	7 787	4 626	55 465	
Persons employed	6 095	1 640	1 667	np	np	2 510	3 288	2 411	930	9 402	
June Quarter 2004											
Establishments	125	131	85	—	22	136	114	16	53	341	
Guest rooms	9 547	5 829	4 843	—	676	6 863	7 861	3 056	1 763	20 219	
Bed spaces	24 284	15 670	15 973	—	1 545	19 042	23 180	7 931	4 229	55 927	
Persons employed	6 160	1 747	1 863	—	254	2 505	3 625	2 563	823	9 770	
ROOM NIGHTS OCCUPIED ('000)											
2003											
June Quarter	500.5	244.9	242.4	np	np	313.0	406.2	169.0	74.0	987.8	
2004											
April	172.1	90.5	93.7	—	7.5	113.4	152.4	60.0	23.0	356.2	
May	173.2	85.6	81.8	—	8.3	107.2	141.4	60.0	23.7	340.5	
June	164.4	83.9	81.2	—	8.8	105.3	137.5	53.8	24.1	329.5	
June Quarter	509.6	260.0	256.6	—	24.6	325.9	431.2	173.7	70.8	1 026.2	
ROOM OCCUPANCY RATE (%)											
2003											
June Quarter	57.4	46.5	57.7	np	np	49.1	58.9	65.6	42.4	54.3	
2004											
April	60.1	51.8	64.5	—	37.0	55.1	64.6	65.4	43.5	58.7	
May	58.5	47.4	54.5	—	39.7	50.4	58.0	63.3	43.3	54.3	
June	57.6	48.0	55.9	—	43.2	51.4	58.3	58.6	45.6	54.4	
June Quarter	58.7	49.0	58.2	—	40.0	52.3	60.3	62.5	44.1	55.8	
GUEST NIGHTS ('000)											
2003											
June Quarter	751.1	389.3	531.1	np	np	504.2	725.9	296.8	109.2	1 671.5	
2004											
April	273.7	162.1	220.6	—	11.4	199.9	300.2	107.2	37.7	656.4	
May	250.4	138.4	164.3	—	12.4	168.0	241.5	95.4	35.7	553.1	
June	241.4	138.3	170.1	—	14.1	170.2	242.0	87.3	36.1	549.8	
June Quarter	765.5	438.8	554.9	—	37.8	538.2	783.8	289.9	109.6	1 759.3	
BED OCCUPANCY RATE (%)											
2003											
June Quarter	34.0	27.6	37.2	np	np	28.8	35.8	41.9	25.9	33.1	
2004											
April	37.6	34.5	46.0	—	24.6	35.0	43.2	45.0	29.7	39.1	
May	33.3	28.5	33.2	—	25.8	28.5	33.6	38.8	27.3	31.9	
June	33.3	29.4	35.5	—	30.4	29.9	34.8	36.7	28.5	32.8	
June Quarter	34.7	30.8	38.2	—	26.9	31.1	37.2	40.2	28.5	34.6	

— nil or rounded to zero (including null cells)

(a) Star grade classifications have been revised. See Explanatory Notes.

np not available for publication but included in totals where applicable, unless otherwise indicated

Period	Licensed hotels with facilities	Motels and guest houses	Serviced apartments	STAR GRADING						Total
				1	2	3	4	5	Ungraded	
GUEST ARRIVALS ('000)										
2003										
June Quarter	343.7	183.4	154.8	np	np	225.5	290.4	103.5	48.4	682.0
2004										
April	122.6	74.8	62.6	—	5.5	88.1	110.4	38.9	17.1	260.0
May	122.7	67.2	49.0	—	6.2	77.5	95.9	42.5	16.7	238.8
June	117.2	65.4	50.4	—	6.2	76.4	93.5	39.7	17.2	233.0
June Quarter	362.5	207.4	162.0	—	17.9	242.0	299.9	121.1	51.0	731.9
AVERAGE LENGTH OF STAY (days)										
2003										
June Quarter	2.2	2.1	3.4	np	np	2.2	2.5	2.9	2.3	2.5
2004										
April	2.2	2.2	3.5	—	2.1	2.3	2.7	2.8	2.2	2.5
May	2.0	2.1	3.4	—	2.0	2.2	2.5	2.2	2.1	2.3
June	2.1	2.1	3.4	—	2.3	2.2	2.6	2.2	2.1	2.4
June Quarter	2.1	2.1	3.4	—	2.1	2.2	2.6	2.4	2.2	2.4
TAKINGS FROM ACCOMMODATION (\$'000)										
2003										
June Quarter	54 838	20 133	29 211	np	np	25 754	46 681	24 649	5 544	104 182
2004										
April	19 669	7 473	11 960	—	457	9 643	17 944	9 392	1 666	39 102
May	19 669	6 914	9 819	—	534	8 979	16 047	9 162	1 681	36 403
June	18 438	6 630	10 133	—	604	8 907	15 677	8 302	1 712	35 201
June Quarter	57 777	21 017	31 911	—	1 595	27 528	49 667	26 855	5 059	110 705
AVERAGE TAKINGS PER ROOM NIGHT OCCUPIED (\$)										
2003										
June Quarter	109.6	82.2	120.5	np	np	82.3	114.9	145.9	75.0	105.5
2004										
April	114.3	82.6	127.7	—	60.9	85.0	117.7	156.6	72.5	109.8
May	113.6	80.8	120.1	—	64.3	83.8	113.5	152.7	71.0	106.9
June	112.2	79.0	124.8	—	68.9	84.5	114.0	154.4	70.9	106.8
June Quarter	113.4	80.8	124.4	—	64.9	84.5	115.2	154.6	71.5	107.9
AVERAGE TAKINGS PER AVAILABLE ROOM NIGHT (\$)										
2003										
June Quarter	62.9	38.2	69.5	np	np	40.4	67.7	95.7	31.8	57.3
2004										
April	68.7	42.7	82.3	—	22.6	46.8	76.1	102.4	31.5	64.5
May	66.5	38.3	65.4	—	25.5	42.2	65.8	96.7	30.8	58.1
June	64.6	37.9	69.7	—	29.8	43.5	66.5	90.6	32.4	58.1
June Quarter	66.6	39.6	72.4	—	25.9	44.2	69.4	96.6	31.5	60.2

— nil or rounded to zero (including null cells)

np not available for publication but included in totals where applicable, unless otherwise indicated

(a) Star grade classifications have been revised. See Explanatory Notes.

HOTELS, MOTELS AND SERVICED APARTMENTS, Star grading(a)—Tas.

Period	Licensed hotels with facilities	Motels and guest houses	Serviced apartments	STAR GRADING					Ungraded	Total
				1	2	3	4	5		
ESTABLISHMENTS, CAPACITY AND EMPLOYMENT (no.)										
June Quarter 2003										
Establishments	54	57	33	1	15	71	47	—	10	144
Guest rooms	2 916	1 910	1 179	np	np	2 559	2 641	—	np	6 005
Bed spaces	8 113	5 727	4 049	np	np	7 713	7 716	—	np	17 889
Persons employed	2 453	987	582	np	np	1 335	2 252	—	np	4 022
June Quarter 2004										
Establishments	55	57	34	1	11	74	50	1	9	146
Guest rooms	2 980	1 913	1 284	np	406	2 625	2 856	np	np	6 177
Bed spaces	8 023	5 661	4 348	np	1 189	7 735	8 225	np	np	18 032
Persons employed	2 566	940	615	np	180	1 370	2 325	np	np	4 121
ROOM NIGHTS OCCUPIED ('000)										
2003										
June Quarter	132.8	83.5	62.7	np	np	110.3	146.3	—	np	279.0
2004										
April	55.6	34.7	24.8	np	3.6	48.8	59.0	—	np	115.0
May	45.7	26.9	19.6	np	2.6	36.1	50.6	—	np	92.2
June	38.5	23.7	18.9	np	2.4	29.9	45.7	np	np	81.1
June Quarter	139.8	85.3	63.3	np	8.6	114.8	155.3	np	np	288.3
ROOM OCCUPANCY RATE (%)										
2003										
June Quarter	50.0	48.0	58.4	np	np	47.4	60.9	—	np	51.0
2004										
April	62.9	60.4	64.4	np	29.2	62.0	68.9	—	np	62.5
May	50.1	45.3	49.3	np	21.0	44.4	57.1	—	np	48.5
June	43.0	41.4	48.9	np	19.4	37.9	53.3	np	np	43.7
June Quarter	52.0	49.0	54.1	np	23.2	48.1	59.7	np	np	51.5
GUEST NIGHTS ('000)										
2003										
June Quarter	211.9	158.2	138.0	np	np	220.4	244.1	—	np	508.1
2004										
April	92.6	67.4	57.9	np	5.9	97.7	106.1	—	np	217.9
May	70.6	49.2	39.4	np	3.9	67.8	81.3	—	np	159.2
June	62.4	44.8	40.6	np	3.5	58.1	79.6	np	np	147.8
June Quarter	225.6	161.4	137.8	np	13.3	223.6	267.0	np	np	524.9
BED OCCUPANCY RATE (%)										
2003										
June Quarter	28.7	30.4	37.5	np	np	31.4	34.8	—	np	31.2
2004										
April	38.8	39.7	44.4	np	16.5	42.1	43.0	—	np	40.4
May	28.6	28.0	29.2	np	10.5	28.3	31.9	—	np	28.6
June	25.9	26.4	31.1	np	9.9	25.0	32.3	np	np	27.3
June Quarter	31.1	31.3	34.8	np	12.3	31.8	35.7	np	np	32.1

— nil or rounded to zero (including null cells)

np not available for publication but included in totals where applicable, unless otherwise indicated

(a) Star grade classifications have been revised. See Explanatory Notes.

Period	Licensed hotels with facilities	Motels and guest houses	Serviced apartments	STAR GRADING						Total
				1	2	3	4	5	Ungraded	
GUEST ARRIVALS ('000)										
2003										
June Quarter	112.6	88.9	57.4	np	np	120.6	114.0	—	np	258.8
2004										
April	50.7	36.3	25.5	np	3.5	53.9	50.3	—	np	112.4
May	40.8	27.3	17.5	np	2.3	38.6	41.0	—	np	85.6
June	35.2	24.8	17.2	np	2.2	33.9	37.2	np	np	77.2
June Quarter	126.7	88.3	60.3	np	7.9	126.4	128.5	np	np	275.3
AVERAGE LENGTH OF STAY (days)										
2003										
June Quarter	1.9	1.8	2.4	np	np	1.8	2.1	—	np	2.0
2004										
April	1.8	1.9	2.3	np	1.7	1.8	2.1	—	np	1.9
May	1.7	1.8	2.2	np	1.7	1.8	2.0	—	np	1.9
June	1.8	1.8	2.4	np	1.6	1.7	2.1	np	np	1.9
June Quarter	1.8	1.8	2.3	np	1.7	1.8	2.1	np	np	1.9
TAKINGS FROM ACCOMMODATION (\$'000)										
2003										
June Quarter	13 450	8 072	7 191	np	np	9 489	17 627	—	np	28 712
2004										
April	6 036	3 568	3 185	np	223	4 608	7 591	—	np	12 789
May	4 953	2 683	2 353	np	135	3 250	6 368	—	np	9 988
June	4 113	2 300	2 262	np	132	2 659	5 570	np	np	8 675
June Quarter	15 101	8 550	7 800	np	489	10 516	19 528	np	np	31 452
AVERAGE TAKINGS PER ROOM NIGHT OCCUPIED (\$)										
2003										
June Quarter	101.3	96.7	114.7	np	np	86.0	120.5	—	np	102.9
2004										
April	108.6	102.9	128.4	np	62.6	94.4	128.7	—	np	111.2
May	108.3	99.8	120.0	np	51.0	90.0	125.9	—	np	108.3
June	106.9	96.9	120.0	np	55.9	89.0	121.9	np	np	107.0
June Quarter	108.1	100.2	123.3	np	57.2	91.6	125.8	np	np	109.1
AVERAGE TAKINGS PER AVAILABLE ROOM NIGHT (\$)										
2003										
June Quarter	50.7	46.4	67.0	np	np	40.7	73.3	—	np	52.5
2004										
April	68.4	62.2	82.7	np	18.3	58.5	88.6	—	np	69.4
May	54.3	45.2	59.1	np	10.7	39.9	71.9	—	np	52.5
June	46.0	40.1	58.7	np	10.8	33.8	65.0	np	np	46.8
June Quarter	56.2	49.1	66.8	np	13.2	44.0	75.1	np	np	56.2

— nil or rounded to zero (including null cells)

np not available for publication but included in totals where applicable, unless otherwise indicated

(a) Star grade classifications have been revised. See Explanatory Notes.

Period	Licensed hotels with facilities	Motels and guest houses	Serviced apartments	STAR GRADING						Total
				1	2	3	4	5	Ungraded	
ESTABLISHMENTS, CAPACITY AND EMPLOYMENT (no.)										
June Quarter 2003										
Establishments	25	46	19	4	17	35	18	3	13	90
Guest rooms	2 216	2 944	1 223	np	682	2 318	2 530	np	368	6 383
Bed spaces	6 188	8 617	4 017	np	1 941	7 114	7 712	np	1 019	18 822
Persons employed	1 968	952	387	np	237	849	1 225	np	152	3 307
June Quarter 2004										
Establishments	23	45	22	2	14	38	21	1	14	90
Guest rooms	2 117	2 871	1 499	np	np	2 290	2 892	np	448	6 487
Bed spaces	5 704	8 600	4 557	np	np	7 032	8 390	np	1 179	18 861
Persons employed	1 725	856	422	np	np	710	1 709	np	185	3 003
ROOM NIGHTS OCCUPIED ('000)										
2003										
June Quarter	114.1	127.1	65.3	np	25.8	99.6	142.1	np	13.8	306.5
2004										
April	38.5	41.5	23.4	np	np	32.5	53.0	np	np	103.4
May	43.8	46.0	28.9	np	8.6	36.5	62.1	np	np	118.7
June	45.3	48.5	34.7	np	9.1	41.3	63.7	np	np	128.5
June Quarter	127.6	136.0	87.0	np	np	110.3	178.8	np	21.7	350.6
ROOM OCCUPANCY RATE (%)										
2003										
June Quarter	56.6	47.4	58.7	np	41.6	47.2	61.7	np	41.1	52.8
2004										
April	60.5	48.2	55.5	np	np	47.3	61.1	np	np	53.9
May	66.8	51.7	66.3	np	49.7	51.3	69.2	np	np	59.9
June	71.3	56.3	77.1	np	54.9	60.2	73.5	np	np	66.0
June Quarter	66.2	52.0	66.5	np	np	52.9	67.9	np	61.8	60.0
GUEST NIGHTS ('000)										
2003										
June Quarter	177.6	219.0	127.8	np	39.5	188.9	228.0	np	23.1	524.5
2004										
April	62.4	76.4	46.7	np	np	63.8	88.1	np	np	185.5
May	67.5	79.5	52.2	np	14.8	65.9	97.4	np	np	199.2
June	73.9	85.9	64.3	np	17.2	78.0	104.7	np	np	224.1
June Quarter	203.8	241.7	163.2	np	np	207.7	290.1	np	36.0	608.7
BED OCCUPANCY RATE (%)										
2003										
June Quarter	31.5	27.9	35.0	np	22.4	29.2	32.5	np	25.0	30.6
2004										
April	36.4	29.6	35.6	np	np	30.2	35.0	np	np	33.1
May	38.2	29.8	38.5	np	30.8	30.2	37.4	np	np	34.4
June	43.2	33.3	47.0	np	36.8	37.0	41.6	np	np	39.6
June Quarter	39.3	30.9	40.5	np	np	32.5	38.0	np	37.5	35.7

np not available for publication but included in totals where applicable, unless otherwise indicated

(a) Star grade classifications have been revised. See Explanatory Notes.

Period	Licensed hotels with facilities	Motels and guest houses	Serviced apartments	STAR GRADING						Ungraded	Total
				1	2	3	4	5			
GUEST ARRIVALS ('000)											
2003											
June Quarter	90.3	124.6	48.8	np	21.4	104.4	102.6	np	11.6	263.7	
2004											
April	36.4	47.1	20.0	np	np	38.1	49.6	np	np	103.5	
May	37.1	45.4	21.6	np	6.0	37.1	51.6	np	np	104.1	
June	40.3	50.4	26.3	np	7.6	42.3	55.9	np	np	117.0	
June Quarter	113.8	142.9	67.9	np	np	117.5	157.1	np	15.8	324.6	
AVERAGE LENGTH OF STAY (days)											
2003											
June Quarter	2.0	1.8	2.6	np	1.8	1.8	2.2	np	2.0	2.0	
2004											
April	1.7	1.6	2.3	np	np	1.7	1.8	np	np	1.8	
May	1.8	1.7	2.4	np	2.5	1.8	1.9	np	np	1.9	
June	1.8	1.7	2.4	np	2.3	1.8	1.9	np	np	1.9	
June Quarter	1.8	1.7	2.4	np	np	1.8	1.8	np	2.3	1.9	
TAKINGS FROM ACCOMMODATION (\$'000)											
2003											
June Quarter	15 132	13 149	7 961	np	1 690	10 011	18 542	np	1 199	36 241	
2004											
April	4 574	4 196	2 903	np	np	3 182	6 307	np	np	11 673	
May	5 603	4 732	3 687	np	642	3 531	8 201	np	np	14 022	
June	5 793	5 001	4 193	np	754	4 041	8 389	np	np	14 987	
June Quarter	15 970	13 929	10 783	np	np	10 754	22 898	np	1 900	40 682	
AVERAGE TAKINGS PER ROOM NIGHT OCCUPIED (\$)											
2003											
June Quarter	132.6	103.5	121.8	np	65.4	100.5	130.5	np	87.1	118.2	
2004											
April	119.0	101.0	123.9	np	np	97.9	119.0	np	np	112.9	
May	127.8	102.9	127.6	np	75.1	96.9	132.2	np	np	118.1	
June	127.9	103.2	120.9	np	82.4	97.7	131.6	np	np	116.7	
June Quarter	125.2	102.4	123.9	np	np	97.5	128.1	np	87.4	116.0	
AVERAGE TAKINGS PER AVAILABLE ROOM NIGHT (\$)											
2003											
June Quarter	75.0	49.1	71.5	np	27.2	47.5	80.5	np	35.8	62.4	
2004											
April	72.0	48.7	68.8	np	np	46.3	72.7	np	np	60.8	
May	85.4	53.2	84.5	np	37.3	49.7	91.5	np	np	70.7	
June	91.2	58.1	93.2	np	45.3	58.8	96.7	np	np	77.0	
June Quarter	82.9	53.3	82.4	np	np	51.6	87.0	np	54.0	69.6	

np not available for publication but included in totals where applicable, unless otherwise indicated

(a) Star grade classifications have been revised. See Explanatory Notes.

Period	Licensed hotels with facilities	Motels and guest houses	Serviced apartments	STAR GRADING						Ungraded	Total
				1	2	3	4	5			
ESTABLISHMENTS, CAPACITY AND EMPLOYMENT (no.)											
June Quarter 2003											
Establishments	15	26	18	1	9	17	29	1	2	59	
Guest rooms	1 915	1 834	1 306	np	469	1 356	2 825	np	np	5 055	
Bed spaces	5 261	5 306	4 415	np	1 632	4 131	8 126	np	np	14 982	
Persons employed	1 301	631	461	np	107	545	1 396	np	np	2 393	
June Quarter 2004											
Establishments	15	25	17	—	6	18	30	1	2	57	
Guest rooms	1 920	1 783	1 241	—	np	1 492	2 832	np	np	4 944	
Bed spaces	4 757	4 976	4 044	—	np	4 432	7 675	np	np	13 777	
Persons employed	1 545	675	414	—	np	586	1 449	np	np	2 634	
ROOM NIGHTS OCCUPIED ('000)											
2003											
June Quarter	121.4	88.1	82.5	np	19.5	66.7	179.2	np	np	292.0	
2004											
April	41.3	29.7	27.7	—	np	22.7	63.7	np	np	98.7	
May	43.2	31.6	28.3	—	np	23.9	66.9	np	np	103.0	
June	39.5	29.4	25.6	—	np	22.5	60.4	np	np	94.5	
June Quarter	124.0	90.7	81.6	—	np	69.1	190.9	np	np	296.3	
ROOM OCCUPANCY RATE (%)											
2003											
June Quarter	69.6	52.8	69.5	np	45.7	54.0	69.7	np	np	63.5	
2004											
April	71.7	55.5	74.4	—	np	50.7	74.9	np	np	66.6	
May	72.5	57.1	73.6	—	np	51.8	76.1	np	np	67.2	
June	68.7	55.0	68.6	—	np	50.3	71.1	np	np	63.7	
June Quarter	71.0	55.9	72.2	—	np	50.9	74.1	np	np	65.9	
GUEST NIGHTS ('000)											
2003											
June Quarter	177.8	156.0	152.6	np	42.2	129.2	273.6	np	np	486.4	
2004											
April	61.3	52.7	52.9	—	np	44.5	104.1	np	np	166.8	
May	57.6	53.1	49.4	—	np	45.4	98.0	np	np	160.1	
June	54.6	50.0	45.8	—	np	43.1	91.2	np	np	150.3	
June Quarter	173.4	155.8	148.0	—	np	132.9	293.3	np	np	477.3	
BED OCCUPANCY RATE (%)											
2003											
June Quarter	37.1	32.3	38.0	np	28.4	34.4	37.0	np	np	35.7	
2004											
April	43.0	35.3	43.6	—	np	33.5	45.2	np	np	40.4	
May	39.0	34.5	39.4	—	np	33.0	41.2	np	np	37.5	
June	38.2	33.5	37.7	—	np	32.4	39.6	np	np	36.4	
June Quarter	40.1	34.4	40.2	—	np	33.0	42.0	np	np	38.1	

— nil or rounded to zero (including null cells)

(a) Star grade classifications have been revised. See Explanatory Notes.

np not available for publication but included in totals where applicable, unless otherwise indicated

Period	Licensed hotels with facilities	Motels and guest houses	Serviced apartments	STAR GRADING						Ungraded	Total
				1	2	3	4	5			
GUEST ARRIVALS ('000)											
2003											
June Quarter	72.2	76.4	39.3	np	18.5	47.4	103.6	np	np	187.8	
2004											
April	34.8	26.6	14.4	—	np	17.1	48.9	np	np	75.8	
May	33.3	27.2	14.6	—	np	17.7	48.1	np	np	75.1	
June	31.5	26.2	13.8	—	np	17.6	45.1	np	np	71.5	
June Quarter	99.6	80.0	42.8	—	np	52.4	142.1	np	np	222.4	
AVERAGE LENGTH OF STAY (days)											
2003											
June Quarter	2.5	2.0	3.9	np	2.3	2.7	2.6	np	np	2.6	
2004											
April	1.8	2.0	3.7	—	np	2.6	2.1	np	np	2.2	
May	1.7	2.0	3.4	—	np	2.6	2.0	np	np	2.1	
June	1.7	1.9	3.3	—	np	2.4	2.0	np	np	2.1	
June Quarter	1.7	1.9	3.5	—	np	2.5	2.1	np	np	2.1	
TAKINGS FROM ACCOMMODATION (\$'000)											
2003											
June Quarter	14 902	7 580	10 253	np	1 533	5 410	21 723	np	np	32 736	
2004											
April	5 250	2 820	3 593	—	np	2 022	8 184	np	np	11 662	
May	5 721	2 951	3 728	—	np	2 103	8 727	np	np	12 399	
June	5 027	2 786	3 318	—	np	2 021	7 654	np	np	11 130	
June Quarter	15 998	8 556	10 638	—	np	6 146	24 564	np	np	35 192	
AVERAGE TAKINGS PER ROOM NIGHT OCCUPIED (\$)											
2003											
June Quarter	122.8	86.0	124.2	np	78.5	81.1	121.2	np	np	112.1	
2004											
April	127.1	94.9	129.7	—	np	89.2	128.6	np	np	118.1	
May	132.6	93.5	131.7	—	np	87.8	130.5	np	np	120.3	
June	127.1	94.7	129.9	—	np	89.8	126.7	np	np	117.8	
June Quarter	129.0	94.3	130.4	—	np	88.9	128.7	np	np	118.8	
AVERAGE TAKINGS PER AVAILABLE ROOM NIGHT (\$)											
2003											
June Quarter	85.5	45.4	86.3	np	35.9	43.8	84.5	np	np	71.2	
2004											
April	91.1	52.7	96.5	—	np	45.2	96.3	np	np	78.6	
May	96.1	53.4	96.9	—	np	45.5	99.4	np	np	80.9	
June	87.3	52.1	89.1	—	np	45.2	90.1	np	np	75.0	
June Quarter	91.6	52.7	94.2	—	np	45.3	95.3	np	np	78.2	

— nil or rounded to zero (including null cells)

np not available for publication but included in totals where applicable, unless otherwise indicated

(a) Star grade classifications have been revised. See Explanatory Notes.

<i>Period</i>	<i>South Coast</i>	<i>Illawarra</i>	<i>Sydney</i>	<i>Snowy Mountains</i>	<i>Capital Country</i>	<i>The Murray</i>	<i>Riverina</i>	<i>Explorer Country</i>
---------------	--------------------	------------------	---------------	------------------------	------------------------	-------------------	-----------------	-------------------------

ESTABLISHMENTS, CAPACITY AND EMPLOYMENT (no.)

June Quarter 2004

Establishments	82	35	288	67	65	99	62	126
Guest rooms	2 022	1 237	30 446	2 552	2 100	2 908	1 813	3 619
Bed spaces	6 066	3 609	74 965	9 372	5 856	8 643	5 172	10 635
Persons employed	649	610	19 118	938	901	967	523	1 273

ROOM NIGHTS OCCUPIED ('000)

2004

April	30.6	18.4	657.3	16.8	33.0	53.5	31.2	60.6
May	24.8	18.1	650.6	13.3	32.2	43.9	31.1	58.6
June	22.4	19.1	607.8	21.9	30.8	38.4	29.4	58.1
June Quarter	77.9	55.6	1 915.6	52.0	96.0	135.8	91.7	177.2

ROOM OCCUPANCY RATE (%)

2004

April	50.5	49.5	72.0	32.3	52.3	61.3	57.3	56.1
May	39.6	47.1	68.9	25.2	49.4	48.7	55.4	52.5
June	37.0	51.6	66.5	29.8	48.9	44.1	54.0	53.5
June Quarter	42.3	49.4	69.1	29.2	50.2	51.3	55.6	54.0

GUEST NIGHTS ('000)

2004

April	59.5	33.2	1 109.7	41.3	61.1	103.6	54.8	114.4
May	44.7	28.1	1 023.3	31.4	53.5	77.8	48.6	97.0
June	38.7	32.4	977.2	61.0	53.9	69.9	45.7	101.0
June Quarter	143.0	93.7	3 110.2	133.8	168.5	251.3	149.1	312.4

GUEST ARRIVALS ('000)

2004

April	33.9	16.3	431.1	19.4	43.2	53.7	39.5	77.8
May	25.2	15.4	415.2	14.9	35.9	42.9	33.0	66.9
June	23.4	16.2	402.8	24.5	37.9	38.9	32.7	68.7
June Quarter	82.5	47.9	1 249.2	58.8	117.0	135.6	105.2	213.4

TAKINGS FROM ACCOMMODATION (\$'000)

2004

April	2 819	2 141	97 698	1 669	3 373	4 617	2 771	5 209
May	2 080	2 067	96 839	1 397	3 238	3 582	2 681	4 957
June	1 957	2 246	88 550	3 281	3 070	3 163	2 519	4 999
June Quarter	6 856	6 455	283 086	6 347	9 682	11 362	7 971	15 165

<i>Period</i>	<i>Hunter</i>	<i>North Coast NSW</i>	<i>Northern Rivers Tropical NSW</i>	<i>New England North West</i>	<i>Outback NSW</i>	<i>Central Coast</i>	<i>Blue Mountains</i>
---------------	---------------	--------------------------------	---	---	------------------------	--------------------------	---------------------------

ESTABLISHMENTS, CAPACITY AND EMPLOYMENT (no.)

June Quarter 2004

Establishments	81	157	80	89	45	41	33
Guest rooms	3 375	5 295	2 345	2 550	1 149	1 579	1 331
Bed spaces	10 311	17 644	7 148	7 608	3 220	4 752	3 470
Persons employed	1 917	2 271	714	793	341	783	729

ROOM NIGHTS OCCUPIED ('000)

2004

April	54.4	84.8	37.6	43.1	16.4	22.0	23.3
May	53.8	73.1	35.0	42.2	18.6	19.9	22.5
June	48.1	72.1	33.8	38.4	17.5	18.6	19.6
June Quarter	156.3	230.0	106.4	123.7	52.5	60.5	65.4

ROOM OCCUPANCY RATE (%)

2004

April	53.7	53.9	53.5	56.3	47.5	46.4	58.3
May	51.4	44.9	48.2	53.4	52.3	40.6	54.6
June	47.5	45.4	48.0	50.1	50.7	39.3	49.1
June Quarter	50.9	48.0	49.9	53.3	50.2	42.1	54.0

GUEST NIGHTS ('000)

2004

April	101.3	194.8	78.0	79.5	28.0	48.5	45.2
May	89.8	143.4	66.1	71.3	29.1	39.7	39.6
June	82.0	144.2	62.1	67.1	29.0	36.8	37.0
June Quarter	273.1	482.5	206.1	218.0	86.0	125.0	121.9

GUEST ARRIVALS ('000)

2004

April	56.7	105.0	41.3	54.7	17.5	27.4	27.7
May	51.9	81.0	37.0	47.3	17.3	24.0	24.0
June	48.1	82.7	35.4	45.7	17.4	21.9	22.8
June Quarter	156.7	268.8	113.7	147.7	52.1	73.3	74.5

TAKINGS FROM ACCOMMODATION (\$'000)

2004

April	6 912	9 457	3 869	3 393	1 198	2 975	3 121
May	6 366	7 051	3 077	3 269	1 344	2 371	3 080
June	5 596	6 820	2 967	3 105	1 235	2 094	2 671
June Quarter	18 875	23 329	9 913	9 766	3 776	7 440	8 871

Period	Melbourne	Wimmera	Mallee	Western Western Grampians	Bendigo Loddon	Peninsula	Central Murray	Goulburn	High Country	Lakes	
ESTABLISHMENTS, CAPACITY AND EMPLOYMENT (no.)											
June Quarter 2004											
Establishments	271	6	42	55	20	31	23	20	29	73	22
Guest rooms	21 871	115	1 288	1 453	492	812	784	549	797	1 875	598
Bed spaces	55 387	346	3 712	4 555	1 464	2 405	2 146	1 538	2 345	6 557	1 789
Persons employed	15 371	20	431	687	228	345	349	147	461	898	226

ROOM NIGHTS OCCUPIED ('000)

2004											
April	419.0	1.1	22.9	22.9	7.8	14.2	9.8	9.0	11.6	18.8	10.2
May	440.7	1.1	19.6	20.4	7.2	13.9	7.9	8.0	11.3	16.0	7.8
June	419.8	1.2	21.0	17.9	7.7	12.8	7.4	6.7	10.4	16.4	5.8
June Quarter	1 279.5	3.3	63.6	61.3	22.7	40.8	25.1	23.7	33.3	51.3	23.8

ROOM OCCUPANCY RATE (%)

2004											
April	63.9	31.2	59.3	52.6	52.7	58.2	41.6	54.4	48.6	37.3	56.6
May	65.0	30.0	49.2	45.3	47.4	55.3	32.5	46.8	45.6	31.1	42.1
June	64.0	33.5	54.4	41.7	52.3	52.4	31.5	41.0	43.6	31.4	32.3
June Quarter	64.3	31.6	54.2	46.5	50.7	55.3	35.2	47.4	46.0	33.2	43.6

GUEST NIGHTS ('000)

2004											
April	704.7	2.0	42.1	48.4	13.1	26.3	18.2	16.1	19.1	40.4	19.6
May	691.5	1.7	31.1	36.0	10.5	22.4	13.2	13.1	16.6	31.7	13.1
June	681.2	2.0	36.5	33.6	11.9	21.1	12.8	11.2	15.3	36.1	10.5
June Quarter	2 077.4	5.6	109.7	118.0	35.5	69.8	44.2	40.4	51.0	108.2	43.2

GUEST ARRIVALS ('000)

2004											
April	282.1	1.6	25.2	29.9	9.6	15.6	9.7	9.7	12.3	23.4	13.9
May	290.9	1.4	20.8	23.0	8.0	14.7	7.6	8.1	11.5	17.5	9.3
June	282.0	1.6	21.8	21.3	8.4	13.1	7.0	7.5	10.7	20.4	7.2
June Quarter	855.0	4.7	67.8	74.3	26.0	43.4	24.3	25.4	34.6	61.2	30.3

TAKINGS FROM ACCOMMODATION (\$'000)

2004											
April	55 680	72	1 991	2 550	664	1 387	1 268	741	1 037	1 788	949
May	58 967	70	1 600	2 107	588	1 335	1 012	642	963	1 472	653
June	55 454	74	1 839	1 737	643	1 212	896	578	887	1 811	502
June Quarter	170 102	216	5 430	6 394	1 896	3 933	3 176	1 961	2 887	5 071	2 104

<i>Period</i>	<i>Gippsland</i>	<i>Melbourne East</i>	<i>Geelong</i>	<i>Macedon</i>	<i>Spa Country</i>	<i>Ballarat</i>	<i>Central Highlands</i>	<i>Upper Yarra</i>	<i>Murray East</i>	<i>Phillip Island</i>
ESTABLISHMENTS, CAPACITY AND EMPLOYMENT (no.)										
June Quarter 2004										
Establishments	33	14	25	5	4	23	13	11	15	11
Guest rooms	1 000	499	837	123	97	768	311	386	447	371
Bed spaces	2 780	1 311	2 316	318	243	2 444	937	987	1 185	1 247
Persons employed	280	587	490	102	121	365	85	198	120	134
ROOM NIGHTS OCCUPIED ('000)										
2004										
April	13.1	5.7	12.7	1.5	1.8	13.9	4.9	2.9	6.8	5.4
May	12.1	5.8	13.0	1.7	1.5	12.9	3.5	3.0	5.7	3.5
June	10.8	4.8	11.9	1.6	1.5	12.0	3.0	2.8	4.1	3.6
<i>June Quarter</i>	36.0	16.3	37.7	4.8	4.8	38.8	11.4	8.8	16.6	12.5
ROOM OCCUPANCY RATE (%)										
2004										
April	43.8	38.2	50.7	40.8	61.5	60.4	52.3	25.5	51.0	48.8
May	39.1	37.7	50.1	44.1	50.1	54.2	35.8	25.4	40.9	30.3
June	35.9	32.0	47.5	43.0	50.3	51.9	32.6	24.2	30.4	32.0
<i>June Quarter</i>	39.6	36.0	49.5	42.7	54.0	55.5	40.2	25.0	40.8	36.9
GUEST NIGHTS ('000)										
2004										
April	20.3	9.3	22.4	1.8	3.3	30.9	9.8	4.9	11.9	13.8
May	17.3	8.5	19.7	1.9	2.7	25.9	6.2	4.4	9.4	7.2
June	16.7	7.6	19.2	1.8	2.7	25.1	6.5	4.5	6.5	7.7
<i>June Quarter</i>	54.3	25.4	61.3	5.5	8.7	81.9	22.5	13.8	27.7	28.8
GUEST ARRIVALS ('000)										
2004										
April	12.6	5.6	12.8	1.1	2.1	16.7	6.1	3.0	7.3	6.6
May	11.1	5.0	10.7	1.2	1.8	13.8	4.3	2.6	5.6	3.7
June	9.8	4.4	11.1	1.2	1.7	12.8	4.0	2.6	4.1	3.8
<i>June Quarter</i>	33.5	15.0	34.6	3.4	5.7	43.3	14.5	8.2	16.9	14.1
TAKINGS FROM ACCOMMODATION (\$'000)										
2004										
April	1 011	811	1 416	181	350	1 364	416	420	515	675
May	927	810	1 368	218	299	1 232	271	416	435	361
June	828	681	1 232	226	317	1 205	269	462	323	367
<i>June Quarter</i>	2 766	2 302	4 017	624	965	3 801	956	1 298	1 273	1 403

Period	Gold Coast	Brisbane	Sunshine Coast	Hervey Bay/Maryborough	Darling Downs	Bundaberg	Fitzroy	Mackay
ESTABLISHMENTS, CAPACITY AND EMPLOYMENT (no.)								
June Quarter 2004								
Establishments	155	160	104	50	65	29	87	54
Guest rooms	13 175	9 766	4 890	1 867	1 653	744	3 277	1 762
Bed spaces	42 063	28 352	17 004	5 905	5 074	2 315	10 000	5 327
Persons employed	8 858	6 529	2 183	861	599	267	1 551	1 054
ROOM NIGHTS OCCUPIED ('000)								
2004								
April	255.5	198.1	89.7	28.3	29.7	13.3	52.8	28.9
May	236.4	222.3	73.3	26.3	29.3	12.4	55.4	31.3
June	239.4	232.2	76.0	27.7	30.3	12.9	57.2	29.7
June Quarter	731.3	652.6	239.0	82.3	89.3	38.6	165.4	90.0
ROOM OCCUPANCY RATE (%)								
2004								
April	64.6	68.0	61.2	50.5	59.8	59.4	53.7	54.7
May	57.9	73.8	48.4	45.4	57.3	53.8	54.5	57.3
June	60.6	79.2	51.8	49.4	61.0	57.8	58.2	56.2
June Quarter	61.0	73.7	53.7	48.4	59.3	57.0	55.5	56.1
GUEST NIGHTS ('000)								
2004								
April	606.0	331.8	242.3	58.1	54.2	24.8	91.3	49.4
May	501.1	348.8	172.4	48.6	49.0	20.5	84.5	48.4
June	521.6	372.7	185.2	52.5	51.4	21.8	92.5	48.2
June Quarter	1 628.7	1 053.3	599.9	159.2	154.5	67.1	268.3	146.1
GUEST ARRIVALS ('000)								
2004								
April	171.7	147.1	69.8	27.4	36.3	14.6	47.7	25.7
May	163.8	161.9	54.9	24.4	32.1	12.1	45.1	25.6
June	165.5	165.8	58.0	24.6	33.8	13.7	49.1	26.2
June Quarter	500.9	474.9	182.7	76.4	102.3	40.4	141.9	77.5
TAKINGS FROM ACCOMMODATION (\$'000)								
2004								
April	29 903	22 096	12 186	2 585	2 389	1 170	5 149	2 679
May	25 814	25 715	8 365	2 108	2 378	988	4 826	2 725
June	24 733	27 853	8 366	2 221	2 457	1 000	5 105	2 621
June Quarter	80 451	75 664	28 917	6 914	7 224	3 158	15 080	8 024

<i>Period</i>	<i>Whitsundays</i>	<i>Northern</i>	<i>Tropical North Queensland</i>	<i>Outback</i>	<i>Great Barrier Reef(a)</i>
ESTABLISHMENTS, CAPACITY AND EMPLOYMENT (no.)					
June Quarter 2004					
Establishments	30	51	175	55	18
Guest rooms	2 657	2 370	11 264	1 476	2 729
Bed spaces	9 376	6 576	32 168	4 191	9 262
Persons employed	2 203	1 201	5 859	554	2 623
ROOM NIGHTS OCCUPIED ('000)					
2004					
April	44.1	44.7	199.2	21.5	43.6
May	38.3	47.1	207.1	25.7	33.7
June	41.3	48.6	224.0	26.1	35.3
<i>June Quarter</i>	123.7	140.4	630.3	73.3	112.6
ROOM OCCUPANCY RATE (%)					
2004					
April	55.4	63.8	58.9	48.6	53.2
May	46.5	65.2	59.3	56.1	39.8
June	51.8	69.5	66.3	58.9	43.2
<i>June Quarter</i>	51.2	66.1	61.5	54.6	45.3
GUEST NIGHTS ('000)					
2004					
April	107.7	71.0	412.9	32.9	107.3
May	82.1	70.4	402.3	36.8	75.4
June	94.3	75.9	455.0	39.2	83.9
<i>June Quarter</i>	284.1	217.2	1 270.2	108.9	266.6
GUEST ARRIVALS ('000)					
2004					
April	34.5	34.4	129.1	20.3	28.5
May	28.3	35.1	130.9	22.9	21.4
June	32.3	36.6	145.5	25.6	24.1
<i>June Quarter</i>	95.1	106.2	405.4	68.8	74.0
TAKINGS FROM ACCOMMODATION (\$'000)					
2004					
April	8 866	4 220	26 284	1 726	11 300
May	6 856	4 408	25 519	2 028	7 778
June	6 568	4 616	28 431	2 105	7 526
<i>June Quarter</i>	22 290	13 244	80 233	5 859	26 603

(a) Includes those parts of other Tourism Regions which fall within the Great Barrier Reef geographic area. Data are not included in Queensland totals.

<i>Period</i>	<i>Limestone Coast</i>	<i>Murraylands</i>	<i>Fleurieu Peninsula</i>	<i>Adelaide</i>	<i>Adelaide Hills</i>	<i>Barossa</i>	<i>Riverland</i>
---------------	------------------------	--------------------	---------------------------	-----------------	-----------------------	----------------	------------------

ESTABLISHMENTS, CAPACITY AND EMPLOYMENT (no.)

June Quarter 2004

Establishments	35	4	12	97	4	9	14
Guest rooms	981	97	370	6 822	134	363	500
Bed spaces	2 886	301	1 048	18 855	444	1 004	1 482
Persons employed	452	51	288	3 942	129	332	547

ROOM NIGHTS OCCUPIED ('000)

2004

April	16.9	1.7	5.3	119.6	2.3	6.9	7.6
May	16.6	1.6	4.4	123.6	2.3	6.1	7.8
June	13.3	1.7	3.9	109.4	2.3	4.7	7.1
June Quarter	46.8	5.0	13.6	352.6	6.9	17.6	22.5

ROOM OCCUPANCY RATE (%)

2004

April	57.5	56.7	48.0	58.9	57.4	63.2	50.4
May	54.5	53.7	38.7	58.9	55.0	53.8	50.3
June	45.1	59.0	34.8	53.8	56.6	43.2	47.5
June Quarter	52.4	56.5	40.5	57.2	56.3	53.4	49.4

GUEST NIGHTS ('000)

2004

April	29.1	2.8	11.5	204.2	5.4	13.7	13.2
May	25.4	2.3	8.9	194.7	4.1	10.5	12.5
June	20.4	2.5	7.8	174.3	4.3	8.1	11.4
June Quarter	74.9	7.6	28.2	573.2	13.8	32.3	37.2

GUEST ARRIVALS ('000)

2004

April	17.5	1.8	6.8	80.9	1.8	7.3	8.4
May	14.6	1.6	5.4	79.2	2.0	6.1	8.1
June	11.3	1.4	4.2	74.9	2.2	5.0	7.0
June Quarter	43.4	4.7	16.4	235.0	6.0	18.4	23.5

TAKINGS FROM ACCOMMODATION (\$'000)

2004

April	1 393	116	521	14 630	223	719	578
May	1 279	101	423	14 744	224	620	589
June	1 067	129	345	12 961	221	501	542
June Quarter	3 740	346	1 289	42 335	668	1 839	1 709

<i>Period</i>	<i>Clare Valley</i>	<i>Flinders Ranges</i>	<i>Outback SA</i>	<i>Eyre Peninsula</i>	<i>Yorke Peninsula</i>	<i>Kangaroo Island</i>
---------------	---------------------	------------------------	-------------------	-----------------------	------------------------	------------------------

ESTABLISHMENTS, CAPACITY AND EMPLOYMENT (no.)

June Quarter 2004

Establishments	4	20	9	25	8	6
Guest rooms	128	726	651	795	149	194
Bed spaces	397	2 236	1 563	2 270	466	511
Persons employed	87	298	196	572	73	120

ROOM NIGHTS OCCUPIED ('000)

2004

April	2.6	11.8	4.8	12.5	2.0	3.6
May	2.6	12.8	5.9	13.6	1.6	2.7
June	2.2	11.2	6.1	13.7	1.3	2.1
June Quarter	7.4	35.8	16.8	39.8	4.8	8.3

ROOM OCCUPANCY RATE (%)

2004

April	67.2	54.1	24.6	52.3	44.4	61.4
May	64.5	56.8	29.3	55.1	33.6	45.1
June	57.7	51.3	31.3	57.5	28.4	35.3
June Quarter	63.2	54.1	28.4	54.9	35.5	47.3

GUEST NIGHTS ('000)

2004

April	5.2	19.7	7.5	18.7	3.1	7.1
May	4.4	20.2	8.8	18.3	2.3	4.8
June	3.7	17.3	10.4	18.0	1.8	3.8
June Quarter	13.3	57.2	26.8	55.0	7.3	15.8

GUEST ARRIVALS ('000)

2004

April	3.3	13.0	4.5	10.9	2.1	3.5
May	2.9	13.0	4.9	10.6	1.5	2.4
June	2.3	11.6	6.3	10.0	1.3	1.7
June Quarter	8.5	37.6	15.7	31.5	4.9	7.7

TAKINGS FROM ACCOMMODATION (\$'000)

2004

April	260	914	427	927	129	377
May	248	988	495	1 021	102	267
June	213	804	528	1 014	85	184
June Quarter	720	2 706	1 450	2 962	316	827

<i>Period</i>	<i>Australia's Coral Coast</i>	<i>Australia's North West</i>	<i>Australia's South West</i>	<i>Experience Perth</i>	<i>Australia's Golden Outback</i>
---------------	--	---------------------------------------	---------------------------------------	-----------------------------	---

ESTABLISHMENTS, CAPACITY AND EMPLOYMENT (no.)

June Quarter 2004

Establishments	34	49	85	119	54
Guest rooms	1 464	3 164	3 356	10 314	1 921
Bed spaces	4 346	7 485	10 471	28 523	5 102
Persons employed	571	1 370	1 440	5 635	754

ROOM NIGHTS OCCUPIED ('000)

2004

April	24.5	51.3	54.5	201.0	25.1
May	23.9	59.7	40.2	189.2	27.6
June	22.8	64.1	37.0	176.5	29.1
<i>June Quarter</i>	<i>71.2</i>	<i>175.0</i>	<i>131.6</i>	<i>566.7</i>	<i>81.7</i>

ROOM OCCUPANCY RATE (%)

2004

April	55.7	54.0	54.1	65.0	43.5
May	52.7	60.8	38.6	59.2	46.3
June	51.9	67.5	37.1	57.0	50.5
<i>June Quarter</i>	<i>53.4</i>	<i>60.8</i>	<i>43.2</i>	<i>60.4</i>	<i>46.8</i>

GUEST NIGHTS ('000)

2004

April	46.8	81.1	121.8	368.2	38.6
May	39.8	89.8	73.6	311.6	38.3
June	39.1	103.6	70.2	298.7	38.1
<i>June Quarter</i>	<i>125.7</i>	<i>274.4</i>	<i>265.7</i>	<i>978.6</i>	<i>115.0</i>

GUEST ARRIVALS ('000)

2004

April	24.5	27.6	53.7	135.4	18.8
May	20.8	33.7	37.1	128.3	18.9
June	21.3	37.5	35.7	121.2	17.3
<i>June Quarter</i>	<i>66.6</i>	<i>98.8</i>	<i>126.6</i>	<i>384.9</i>	<i>54.9</i>

TAKINGS FROM ACCOMMODATION (\$'000)

2004

April	2 218	5 603	6 358	22 877	2 045
May	2 076	6 983	4 081	21 009	2 254
June	1 948	7 997	3 854	19 099	2 302
<i>June Quarter</i>	<i>6 242</i>	<i>20 583</i>	<i>14 293</i>	<i>62 985</i>	<i>6 602</i>

<i>Period</i>	<i>Greater Hobart</i>	<i>Southern</i>	<i>East Coast</i>	<i>Northern</i>	<i>Greater Launceston</i>	<i>North West</i>	<i>West Coast</i>
---------------	-----------------------	-----------------	-------------------	-----------------	---------------------------	-------------------	-------------------

ESTABLISHMENTS, CAPACITY AND EMPLOYMENT (no.)

June Quarter 2004

Establishments	46	6	13	4	33	33	11
Guest rooms	2 394	155	510	119	1 465	1 073	461
Bed spaces	6 161	480	1 761	452	4 610	3 284	1 284
Persons employed	1 837	69	263	51	1 120	581	200

ROOM NIGHTS OCCUPIED ('000)

2004

April	48.7	2.6	8.1	2.8	29.1	17.7	6.1
May	43.1	1.9	4.8	1.9	24.2	12.7	3.7
June	41.5	1.8	4.6	1.6	18.4	10.7	2.6
June Quarter	133.2	6.3	17.4	6.3	71.7	41.1	12.4

ROOM OCCUPANCY RATE (%)

2004

April	68.8	56.4	52.6	79.1	66.1	55.0	44.2
May	58.9	39.2	30.1	50.9	53.3	38.3	25.8
June	57.8	39.0	29.9	43.9	41.9	33.1	18.5
June Quarter	61.8	44.8	37.5	57.9	53.8	42.1	29.5

GUEST NIGHTS ('000)

2004

April	90.3	5.4	17.7	6.0	55.5	31.0	12.0
May	72.0	3.9	9.7	3.8	43.1	20.0	6.8
June	74.7	3.6	9.7	3.7	33.9	17.2	5.1
June Quarter	237.0	12.9	37.0	13.5	132.4	68.2	23.9

GUEST ARRIVALS ('000)

2004

April	37.4	4.3	13.3	4.0	26.8	18.9	7.6
May	32.3	3.0	7.7	2.8	22.7	12.9	4.3
June	33.4	2.6	6.5	2.5	19.0	10.0	3.3
June Quarter	103.0	10.0	27.6	9.3	68.5	41.7	15.1

TAKINGS FROM ACCOMMODATION (\$'000)

2004

April	5 740	266	907	274	3 110	1 875	617
May	4 962	182	497	196	2 513	1 306	333
June	4 703	150	461	161	1 909	1 044	247
June Quarter	15 405	598	1 865	631	7 532	4 224	1 196

.....

Period	Darwin	Kakadu	Arnhem	Katherine	Tablelands	Petermann	Alice Springs	Canberra
--------	--------	--------	--------	-----------	------------	-----------	---------------	----------

.....

ESTABLISHMENTS, CAPACITY AND EMPLOYMENT (no.)

June Quarter 2004

Establishments	36	4	3	10	7	7	23	57
Guest rooms	2 783	311	83	555	np	np	1 702	4 944
Bed spaces	7 781	1 013	280	1 558	np	np	5 438	13 777
Persons employed	1 353	187	56	187	np	np	778	2 634

.....

ROOM NIGHTS OCCUPIED ('000)

2004

April	49.5	5.6	1.0	6.4	np	np	24.8	98.7
May	64.9	5.3	1.4	8.7	np	np	25.5	103.0
June	70.5	5.2	1.3	9.4	np	np	27.8	94.5
June Quarter	184.8	16.2	3.7	24.5	np	np	78.1	296.3

.....

ROOM OCCUPANCY RATE (%)

2004

April	61.3	60.0	41.0	38.4	np	np	48.6	66.6
May	77.7	55.3	55.2	50.7	np	np	48.3	67.2
June	84.5	56.1	51.4	56.6	np	np	54.5	63.7
June Quarter	74.6	57.1	49.3	48.6	np	np	50.4	65.9

.....

GUEST NIGHTS ('000)

2004

April	81.2	12.8	1.6	11.8	np	np	46.3	166.8
May	104.6	10.1	2.3	15.0	np	np	43.2	160.1
June	117.0	10.7	2.1	17.0	np	np	49.5	150.3
June Quarter	302.7	33.6	5.9	43.8	np	np	139.0	477.3

.....

GUEST ARRIVALS ('000)

2004

April	40.2	8.2	0.7	8.5	np	np	26.3	75.8
May	48.7	6.3	0.8	10.4	np	np	22.4	75.1
June	54.2	7.1	0.8	11.3	np	np	26.1	71.5
June Quarter	143.1	21.7	2.3	30.2	np	np	74.8	222.4

.....

TAKINGS FROM ACCOMMODATION (\$'000)

2004

April	5 071	603	185	478	np	np	2 199	11 662
May	7 864	592	270	662	np	np	2 287	12 399
June	8 512	589	251	713	np	np	2 435	11 130
June Quarter	21 446	1 785	706	1 852	np	np	6 921	35 192

.....

np not available for publication but included in totals where applicable, unless otherwise indicated

(a) The Tourism Regions of Daly and Macdonnell do not appear in this table as there are no establishments in-scope of the collection in these regions.

EXPLANATORY NOTES

- INTRODUCTION**
- 1** This publication presents data from the quarterly Survey of Tourist Accommodation (STA). The STA is a mailout collection that completely enumerates all in-scope accommodation establishments within Australia.
- SCOPE**
- 2** On a quarterly basis the STA includes hotels, motels, guest houses and serviced apartments with 15 or more rooms or units.
- 3** Short-term non-residential accommodation, which is in scope of the STA, is accommodation which is not leased, and which is provided to guests who would generally stay for periods of less than two months.
- 4** Some establishments also provide long-term residential accommodation. For hotels, motels, guest houses and serviced apartments, the amount of such activity is considered to be insignificant and is included in the data presented in this publication.
- DEFINITIONS OF ACCOMMODATION ESTABLISHMENTS**
- 5** For 2004 the STA includes the following categories of establishments which provide predominantly short-term non-residential accommodation to the general public:
- hotels and resorts with facilities – establishments with 15 or more rooms which are licensed to operate a public bar and which provide accommodation on a room/suite basis, with a bath/shower and toilet in most guest rooms, but which do not have full cooking facilities (i.e. hot plates and oven/microwave) in most guest rooms
 - motels, private hotels and guest houses with facilities – establishments with 15 or more rooms which are not licensed to operate a public bar, and which provide accommodation on a room/suite basis, with a bath/shower and toilet in most guest rooms, but which do not have full cooking facilities (i.e. hot plates and oven/microwave) in most guest rooms
 - serviced apartments – establishments with 15 or more units which mostly comprise self-contained units at the same location, and which are available on a unit/apartment basis to the general public for a minimum of one night. The units should have full cooking facilities (i.e. hot plates and oven/microwave), refrigerator and bath/shower and toilet facilities; all bed linen and towels should be provided, and daily servicing (i.e. cleaning and bed making) must be available through the on-site management, although this service may not necessarily be used.
- COVERAGE**
- 6** The main source of coverage is from the Australian Automobile Association through AAA Tourism Pty Ltd. This is supplemented by notification of new tourism developments and their likely opening dates in selected guides, major tourism journals and periodicals and newspapers. Periodic comparison with lists of accommodation establishments provided by the various tourism commissions and industry associations is also undertaken.
- STAR GRADING**
- 7** Star grade classifications of establishments were revised by AAA Tourism Pty Ltd. These changes were implemented for the STA in the March quarter 2004 and should be taken into account when making comparisons with previous quarters.
- DATA QUALITY**
- 8** The survey does not have a sample component and the data are not subject to sampling variability. However, other inaccuracies collectively referred to as non-sampling error may affect the data. These non-sampling errors may arise from a number of sources, including:
- errors in the reporting of data by providers
 - errors in the process of capturing data
 - estimation for missing data
 - definition and classification errors
 - incomplete coverage.

EXPLANATORY NOTES *continued*

DATA QUALITY *continued*

9 Every effort has been made to reduce non-sampling error to a minimum by careful design and testing of questionnaires, and efficient operating procedures and systems used to compile statistics.

10 The June quarter 2004 response rates were:

- 93% licensed hotels
- 92% motels and guest houses
- 92% serviced apartments.

BREAK IN TIME SERIES

11 In the June quarter 2003 the ABS identified 132 hotels, motels and guest houses and serviced apartments which had been operating for a number of quarters but were not on the STA frame. These additional establishments were included in the STA from the June quarter 2003.

12 The addition of the 132 tourism establishments resulted in a break in time series between the March and June quarters 2003. The impact of the break in time series is explained in Appendix 1, *Tourist Accommodation, Australia* (cat. no. 8635.0), December quarter 2003. Particular care needs to be taken for all calculations of percentage changes that cross the break in series.

TAKINGS FROM ACCOMMODATION

13 From 1 July 2000, takings from accommodation include gross revenue from the provision of accommodation, including GST. Takings from meals are excluded. Where businesses are unable to provide the data inclusive of GST, it is automatically adjusted by the ABS prior to aggregation and release in output.

STATISTICAL GEOGRAPHY

14 Small area statistics for 2004 are classified to the *Australian Standard Geographical Classification (ASGC), 2003 Edition* (cat. no. 1216.0). Data are coded to the statistical local area (SLA) level.

15 These SLA data are aggregated to tourism regions as defined by relevant state and territory tourist commissions. Tourism regions are reviewed annually and are subject to boundary and name changes. Where changes have occurred care should be taken when making comparisons with previously published data at this level. This publication no longer presents comparative tourism region data for the same quarter of the previous year.

16 Details of SLAs, the composition of tourism regions, major changes to tourism regions and outline maps of tourism regions are provided on the Tourism Theme Page of the ABS web site <www.abs.gov.au>.

SEASONAL ADJUSTMENT

17 Seasonal adjustment is a means of removing the estimated effects of normal seasonal variation from the original time series so that the effect of other influences on the series may be more clearly recognised. Seasonal adjustment procedures do not aim to remove the irregular or non-seasonal influences which may be present in any particular month. Irregular influences that are highly volatile can make it difficult to interpret the movement of the series even after adjustment for seasonal variation, and cannot be assumed to indicate changes in the trend.

18 The way in which seasonally adjusted and trend estimates were calculated changed from a Forward Factor methodology to a Concurrent methodology in March quarter 2003. The Forward Factor method relied on an annual analysis of the original time series to estimate seasonal factors that were to be applied in the forthcoming four quarters. Under this method the projected seasonal factors, or forward factors, were not updated until the next annual analysis. The Concurrent methodology uses the most up to date original time series available at each reference period to estimate seasonal factors thus eliminating the need to use projected seasonal factors.

EXPLANATORY NOTES *continued*

TREND ESTIMATES

19 Smoothing the seasonally adjusted series reduces the impact of the irregular component of the seasonally adjusted series and creates the trend estimates. The trend estimates are derived by applying a 7-term Henderson moving average to the quarterly seasonally adjusted series. The Henderson moving average used in the middle of the time series is symmetric but, as the end of a time series is approached, asymmetric forms of the symmetric moving average are applied. Unlike the weights of the standard 7-term Henderson moving average, the weights used with the quarterly data have been tailored to suit the particular characteristics of individual series.

20 While these techniques enable trend estimates for the latest period to be produced, the process does result in revisions to the trend estimates in recent months, particularly as additional original estimates become available. For further information refer to *Information Paper: A Guide to Interpreting Time Series - Monitoring Trends, 2003* (cat. no. 1349.0) available at the ABS web site <www.abs.gov.au>.

EFFECTS OF ROUNDING

21 Where figures have been rounded, discrepancies may occur between totals and the sum of the component items.

RELATED PUBLICATIONS

22 Other ABS publications and products which may be of interest are outlined below. Please note, older publications may no longer be available through ABS bookshops but are available through ABS libraries. All publications released from 1998 onwards are available on the ABS web site <www.abs.gov.au> (charges apply).

Tourist Accommodation, Small Area Data cat. no. 8635.1.55.001–8635.8.55.001
(data cubes for each state/territory – issued quarterly)

Tourist Accommodation, Australia, Expanded Scope Collection cat. no.
8635.0.55.001 (irregular)

Short-term Visitor Arrivals Estimates, Australia cat. no. 3401.0.55.001 (issued
monthly)

Overseas Arrivals and Departures, Australia cat. no. 3401.0 (issued monthly)

Australian National Accounts, Tourism Satellite Account cat. no. 5249.0 (annual)

Directory of Tourism Statistics, 2001 cat. no. 1130.0 (irregular)

23 Current publications and other products released by the ABS are listed in the *Catalogue of Publications and Products* (cat. no. 1101.0). The catalogue is available from any ABS office or the ABS web site <www.abs.gov.au>. The ABS also issues a daily Release Advice on the web site which details products to be released in the week ahead.

ABS DATA AVAILABLE ON REQUEST

24 As well as the statistics included in this publication, the ABS has other relevant data available on request. Inquiries should be made to the National Information and Referral Service on 1300 135 070.

GLOSSARY

Average length of stay	Average length of stay is expressed in numbers of days and calculated by dividing guest nights by guest arrivals.
Average takings per available room night	The takings from accommodation divided by the total number of guest nights for the survey period, $Avg.TakingsPerAvailableRoomNight(\$) = \frac{TakingsFromAccommodation}{(GuestRooms) * (No.OfDaysInThePeriod)}$
Average takings per room night occupied	The takings from accommodation divided by the total number of room nights occupied for the survey period.
Bed occupancy rate	The bed occupancy rate represents bed occupancy expressed as a percentage of total capacity available during the survey period, $BedOccupancyRate (\%) = \frac{GuestNightsOccupied}{(BedSpaces) * (No.OfDaysInThePeriod)} * 100$
Bed spaces	Three-quarter beds are counted as one bed space; double beds as two bed spaces. Cots are excluded.
Capacity	Capacity in terms of guest rooms/units is the maximum number available to accommodate paying guests during the survey period. Capacity closed temporarily for seasonal reasons is included.
Establishments	The number of hotels, motels and guest houses and serviced apartments within the scope of the survey which operated for any part of the survey period, or which closed temporarily for the quarter for seasonal reasons.
Guest arrivals	The total number of paying guests counted only on the first night they stayed at the accommodation establishment during the survey period.
Guest nights	The total number of paying guests counted on each night they stayed at the accommodation establishment during the survey period.
Guest rooms	The maximum number of rooms available at each establishment during the survey period for accommodating short-term paying guests. Units and apartments within serviced apartments are treated as rooms in these survey results.
Occupancy	Occupancy in terms of room nights occupied refers to the total number of nights each guest room was occupied during the survey period. Occupancy in terms of guest nights refers to the total number of paying guests counted on each night they stayed at the accommodation establishment during the survey period.
Persons employed	The total number of persons working at each accommodation establishment at the end of the survey period (including working proprietors and those working on other than accommodation activities).
Room nights available	The number of guest rooms/units available multiplied by the number of days for which they were available during the survey period. For establishments closing (other than for seasonal reasons) or opening during this period, operating periods only are included.
Room nights occupied	The number of nights each guest room/unit was occupied by a paying guest during the survey period.
Room occupancy rate	The room occupancy rate represents room occupancy expressed as a percentage of total capacity available during the survey period, $RoomOccupancyRate (\%) = \frac{RoomNightsOccupied}{(GuestRooms) * (No.OfDaysInThePeriod)} * 100$ <p>providing that, for establishments closing (other than for seasonal reasons) or opening during the survey period, the denominator of the above expression includes only operating periods.</p>

GLOSSARY *continued*

Star grading The grading of hotels, motels and guest houses with facilities and serviced apartments is based on the classification system owned by AAA Tourism Pty Ltd. The gradings are allocated according to a points system based on the amenities and facilities available to guests. Details of the grading scheme are contained in the publication *Accommodation Guide* published by AAA Tourism Pty Ltd for each of the individual Australian Motoring Organisations. For the purpose of classifying establishments to a star grading in this publication, 'half' star gradings are ignored (e.g. a two and a half star grading has been shown as two star).

Takings from accommodation Since 1 July 2000, takings from accommodation include gross revenue from the provision of accommodation, including GST. Takings from meals are excluded. In cases where takings from accommodation data cannot be provided inclusive of GST the amount of GST payable is estimated and the data revised accordingly.

Takings from accommodation for each month generally represent the takings received during that month. Where payments are received in advance of, or after the provision of accommodation to guests, the monthly figure for takings from accommodation may not necessarily bear a direct relationship to the number of guests accommodated during the month.

FOR MORE INFORMATION . . .

- INTERNET* **www.abs.gov.au** the ABS web site is the best place to start for access to summary data from our latest publications, information about the ABS, advice about upcoming releases, our catalogue, and Australia Now—a statistical profile.
- LIBRARY* A range of ABS publications is available from public and tertiary libraries Australia-wide. Contact your nearest library to determine whether it has the ABS statistics you require, or visit our web site for a list of libraries.
- CPI INFOLINE* For current and historical Consumer Price Index data, call 1902 981 074 (call cost 77c per minute).
- DIAL-A-STATISTIC* For the latest figures for National Accounts, Balance of Payments, Labour Force, Average Weekly Earnings, Estimated Resident Population and the Consumer Price Index call 1900 986 400 (call cost 77c per minute).

INFORMATION SERVICE

Data already published that can be provided within five minutes will be free of charge. Our information consultants can also help you to access the full range of ABS information—ABS user pays services can be tailored to your needs, time frame and budget. Publications may be purchased. Specialists are on hand to help you with analytical or methodological advice.

- PHONE* 1300 135 070
- EMAIL* client.services@abs.gov.au
- FAX* 1300 135 211
- POST* Client Services, ABS, GPO Box 796, Sydney NSW 2001

WHY NOT SUBSCRIBE?

ABS subscription services provide regular, convenient and prompt deliveries of selected ABS publications and products as they are released. Email delivery of monthly and quarterly publications is available.

- PHONE* 1300 366 323
- EMAIL* subscriptions@abs.gov.au
- FAX* (03) 9615 7848
- POST* Subscription Services, ABS, GPO Box 2796Y, Melbourne Vic 3001



2863500006044

ISSN 1031 0770

RRP \$23.00